

ZyWALL 70

Internet Security Appliance



Recommended for

- Small and Medium Businesses looking for a cost-effective security appliance and VPN concentrator
- Businesses that have two Internet connections and require non-stop Internet services
- Businesses that are concerned about ease-of-use and remote management through a secure connection
- Organizations with up to 200 users
- Businesses that need a dynamically updated database to provide accurate web content filtering services (powered by Cerberian)

Features

Virtual Private Network

- 70 simultaneous IPSec VPN Connections
- Max. 50Mbps 3DES/AES VPN performance
- DES/3DES/AES encryption
- IKE
- PKI (X.509)

Firewall Security

- Stateful Packet Inspection
- DoS, DDoS
- Attack Alert

Traffic Management

- Multi-Homing (Dual WAN ports)
- Dual WAN auto fail-over, fail-back, policy router
- Dual WAN Load Balancing*
- Policy-based Bandwidth Management
- Dial Backup

Content Filtering

- Java/Active X/Cookie/Proxy Blocking
- URL Blocking
- Dynamic Database

Routing Support

- IP Routing: UDP, TCP, ICMP, ARP, RIP v1 and RIP v2
- IP Alias

IP Management

- DHCP client/relay/server
- Multi-NAT/SUA

ISP Authentication

- PPPoE
- PPTP
- Road Runner Manager

Network Management

- Web-based configurator
- SNMP Support
- HTTPS, SSH & SFTP secure remote access
- Vantage Centralized Network Management*
- Centralized Log & Report

Wireless

- IEEE 802.11b/11g* compliant
- 128-bits WEP Encryption
- IEEE 802.1x Authentication with RADIUS Client
- WPA*
- IPSec VPN over WLAN

Specifications

Hardware Specification

- Power: 100 ~ 240 VAC
- LAN: 10/100 Mbps Ethernet
- WAN1 & WAN2: 10/100 Mbps Ethernet
- 4-port DMZ: 10/100 Mbps Ethernet
- Reset Button
- RS-232 DB9F: Console

- RS-232 DB9M: Dial Backup
- Extension Card Slot for Wireless ready & optional service*

Physical Specification

- Dimensions: 355(L) x 200(D) x 55(H) mm
- Weight: 2,600g

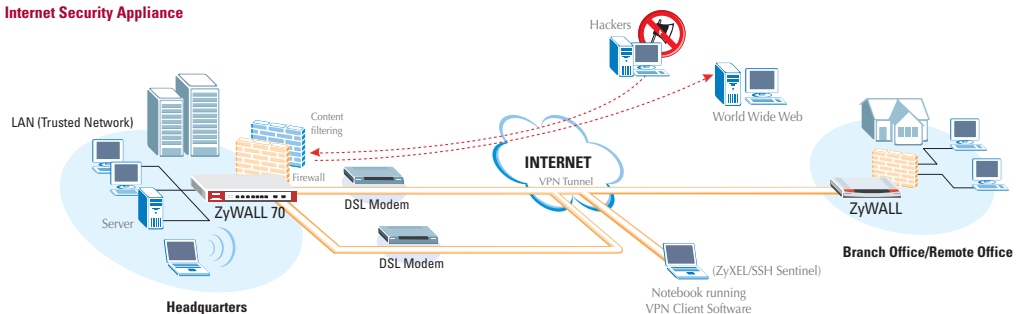
Operating Environment

- Operating Temperature: 0 ~ 40°C
- Operating Humidity: 5 ~ 90% (non-condensing)

* For future release

Application Diagram

Internet Security Appliance



Feature Matrix

Model Name	ZyWALL 2	ZyWALL 2WE	ZyWALL 10W	ZyWALL 30W	ZyWALL 70	ZyWALL 100
Performance						
Firewall Throughput	12Mbps	12Mbps	25Mbps	25Mbps	100Mbps	32Mbps
VPN Throughput	2.2Mbps	2.2Mbps	15Mbps	15Mbps	50Mbps	16Mbps
Physical Specification						
Ports (10/100Mbps auto sensing interface)	4xLAN, 1xWAN	4xLAN, 1xWAN	1xLAN, 1xWAN	1xLAN, 1xWAN	1xLAN, 2xWAN, 4xDMZ	1xLAN, 1xWAN, 1xDMZ
WLAN	na	built-in	upgradable	upgradable	upgradable	upgradable
RS-232 console	•	•	•	•	•	•
Power Supply	12VDC	12VDC	12VDC	12VDC	100 ~ 240VAC	100 ~ 240VAC
Rack-Mounted	na	na	na	na	•	•
Dimensions (L x D x H, mm)	181 x 128 x 36	230 x 161 x 36	230 x 161 x 36	230 x 161 x 36	355 x 200 x 55	355 x 223 x 55
Weight	330g	609g	525g	525g	2,600g	2,600g
Routing Support						
IP Alias Support	•	•	•	•	•	•
NAT support	full-featured	full-featured	full-featured	full-featured	full-featured	full-featured
IP Management						
DHCP	•	•	•	•	•	•
PPTP/PPPoE Client	•	•	•	•	•	•
Network Protections						
IP Protocol Filter	•	•	•	•	•	•
Packet Filter	•	•	•	•	•	•
DoS protections	•	•	•	•	•	•
Stateful Packet Inspection	•	•	•	•	•	•
Content Filtering	Dynamic database	Dynamic database*	Dynamic database	Dynamic database	Dynamic database	Dynamic database*
Applications						
Vantage CNM Support	(*)	(*)	(*)	(*)	(*)	(*)
UPnP support	•	•	•	•	•	•
VPN						
Manual key, IKE	•	•	•	•	•	•
PKI (X.509)	•	na	•	•	•	(*)
DES (56-bits), 3DES (168-bits)	•	•	•	•	•	•
AES encryption	•	(*)	•	•	•	(*)
ICSA Certified Tunnel interfaces	•	•	•	•	•	•
SHA-1/MD5 for IPSec Authentication	•	•	•	•	•	•
Firewall and VPN User Authentication						
Local Profiles	•	•	•	•	•	•
IEEE 802.1x over WLAN	na	•	•	•	•	•
XAUTH VPN authentication	•	(*)	•	•	•	(*)
WLAN MAC Address Control	na	•	•	•	•	•
High Availability (HA)						
Auto fail-over, fail-back	na	na	na	na	•	na
Dial Backup	•	•	•	•	•	•
Dual WAN ports for WAN backup	na	na	na	na	•	na
Dual WAN ports for Load Balance	na	na	na	na	(*)	na
Management						
TFTP/FTP firmware upload	•	•	•	•	•	•
RS232 console port management	•	•	•	•	•	•
HTTPS, SSH, SFTP for remote management	•	na	•	•	•	(*)
SNMP management	•	•	•	•	•	•
Web based configurator	•	•	•	•	•	•
Backup and restore configuration via FTP	•	•	•	•	•	•
Traffic Management						
Bandwith Management	na	na	ACL BW Mgmt	ACL BW Mgmt	Policy-based BW Mgmt	Policy-based BW Mgmt*
Logging/Monitoring						
Centralized Logs	•	•	•	•	•	•
Attack alert	•	•	•	•	•	•
System status monitoring	•	•	•	•	•	•

(*) For future release



Corporate Headquarters
 ZyXEL Communications Corp.
 Tel: +886-3-578-3942
 Fax: +886-3-578-2439
 Email: sales@zyxel.com.tw
 http://www.zyxel.com

North America
 ZyXEL Communications Inc.
 Tel: +1-800-255-4101
 Email: sales@zyxel.com
 http://www.us.zyxel.com

Germany
 ZyXEL Deutschland GmbH.
 Tel: +49 2405 6909 0
 Fax: +49 2405 6909 99
 Email: sales@zyxel.de
 http://www.zyxel.de

Denmark
 ZyXEL Communications A/S
 Tel: +45 39 55 07 00
 Fax: +45 39 55 07 07
 Email: sales@zyxel.dk
 http://www.zyxel.dk

Norway
 ZyXEL Communications A/S
 Tel: +47 22 80 61 80
 Fax: +47 22 80 61 81
 Email: sales@zyxel.no
 http://www.zyxel.no

Sweden
 ZyXEL Communications A/S
 Tel: +46 31 744 7700
 Fax: +46 31 744 7701
 Email: sales@zyxel.se
 http://www.zyxel.se

Finland
 ZyXEL Communications Oy
 Tel: +358-9-4780 8400
 Fax: +358-9-4780 8448
 Email: sales@zyxel.fi
 http://www.zyxel.fi