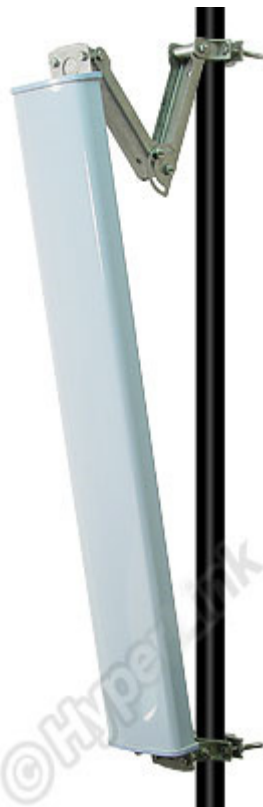




2.4 GHz 20 dBi 90 Degree Sector Panel Wireless LAN Antenna

Model: HG2420P-090



Description

Superior Performance

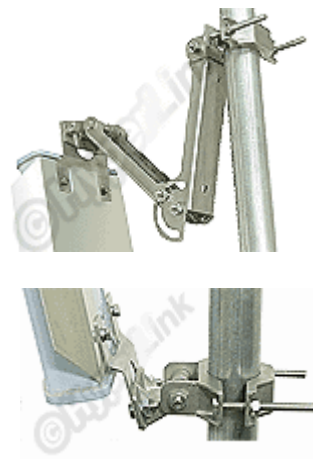
The HyperGain® HG2420P-090 Sector Panel WiFi Antenna combines very high gain with a wide 90° beam-width. It is a professional quality "cell site" antenna designed primarily for service providers in the 2.4GHz ISM band. Applications include IEEE 802.11b and 802.11g wireless LAN systems.

Rugged and Weatherproof

This antenna features a heavy-duty plastic radome for all-weather operation. The mounting system adjusts from 0 to 20 degrees down-tilt.

Ideal for Wireless Internet "Cell" Sites

This antenna is an ideal choice for Wireless Internet Provider "cell" sites since the cell size can be easily determined by adjusting the down-tilt angle. Horizontal coverage is a full 90 degrees, and side-radiation is minimized by the heavy-duty aluminum reflector.





Specifications

Electrical Specifications

Frequency	2400-2500 MHz
Gain	20 dBi
Horizontal Beam Width	90 degrees
Vertical Beam Width	+/- 6.5°
Impedance	50 Ohm
Max. Input Power	250 Watts
VSWR	< 1.3:1 avg.
Connector	N Female
Lightning Protection	Direct Ground

Mechanical Specifications

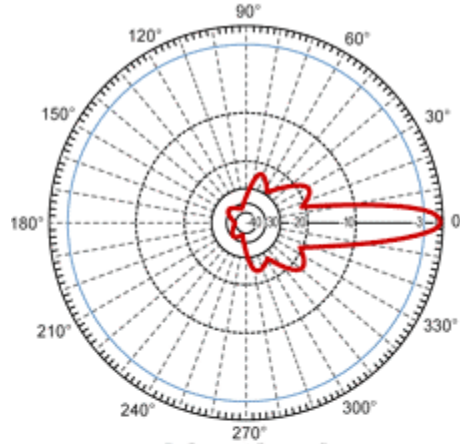
Weight	12 lbs. (5.44 Kg)
Dimensions	39 x 9 x 2.5 inches (99 x 22.9 x 6.4 cm)
Radome Material	UV-Inhibited Polymer
Reflector Material	Aluminum
Operating Temperature	-40° C to to 85° C (-40° F to 185° F)
Mounting	2 inch (5 cm) O.D. pipe max.
Polarization	Vertical
Downtilt (mech)	0 to 20 degrees (adjustable)

Wind Loading Data

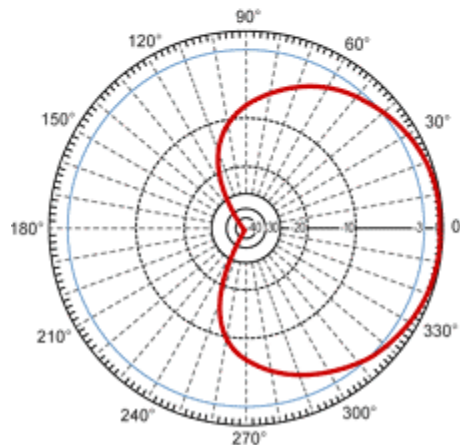
Wind Loading	Front Surface	Side Surface
Area	2.43 sq. ft. (.23 sq. meters)	0.68 (.06 sq. meters)
@ 100 MPH (161 KPH)	79 lbs. (35.8 Kg)	23 lbs.(10.4 Kg)



RF Antenna Gain Patterns



Vertical



Horizontal