

## TWIN WAN VPN GATEWAY

Model XC-DPG503

### The T1 Alternative™

XiNCOM's Broadband Products are the highest quality, most durable constructed routers on the market today. We strive to manufacture the latest technology to be compatible with and surpass today's demanding and ever changing Broadband industry.

#### Overview

The XC-DPG503 has dual WAN ports that allow you to connect two broadband connections of any type, including Cable, DSL and/or T1 for ultimate redundancy via the automatic fail-over and increased bandwidth through load-balancing. With features like NAT, SPI Firewall, DHCP server and Access Filters makes this a must-have all-in-one solution for any small to medium size network.

This router is very easy to configure and manage with a HTTP graphical user interface (GUI), remote web management, e-mail alerts and SNMP. Additionally this router can be used within a network with support for Static Routing and RIP-1/RIP-2 Dynamic Routing. With the addition of UPnP you will be able to dynamically open and close ports required by certain software automatically. With QoS you will be able to schedule and direct your network traffic to take advantage of your available bandwidth.

XiNCOM XC-DPG503 is a VPN capable Dual WAN Gateway with industry standard IPsec encryption. It provides extremely secure LAN-to-LAN connectivity over the internet. The XC-DPG503 supports VPN by encryption, encapsulation, and authentication using the following methods; DES/3DES/AES, MD5, SHA-1 and SHA-2, up to 50 IPsec tunnels are permitted. VPN connection redundancy is maintained by VPN Auto Failover. In the event of a VPN tunnel failing, the XC-DPG503 will re-establish the tunnel with the second WAN port connection.



### XC-DPG503 VPN Features & Benefits

**2 x 10/100 WAN Ports:** The XC-DPG503 incorporates dual 10/100 WAN ports, complete with auto-crossover for easy connection to an existing network. All popular DSL and Cable Modems and connection methods are supported, including Fixed IP, Dynamic IP, PPPoE, even multiple-session PPPoE.

**4-Port 10/100 Switch:** The XC-DPG503 incorporates a 4-port 10/100 N-Way Ethernet Switch, complete with auto-crossover for easy connection to an existing network.

**VPN Security:** Full VPN Endpoint with support for up to 50 VPN tunnels using the IPsec encryption protocol.

**VPN Failover:** Two XC-DPG503 gateways that establish a virtual private network will provide VPN failover by constantly monitoring an active link between endpoints. In the event of a VPN tunnel failing, the XC-DPG503 attempts to re-establish the tunnel. If the retry is unsuccessful, the Gateway then uses the second WAN port and the VPN tunnel is once again re-established.

**SPI Firewall:** Protects your network using advanced Stateful Packet Inspection against unwanted access from the outside along with malicious hackers, DoS and DDoS attacks.

**Load Balancing:** Allows you to use both WAN ports simultaneously, increasing your available bandwidth. You can set load balance type by Packets, Bytes RX+TX and Sessions. Load balancing is session based.

**Advanced NAT Features:** Access Filters, DMZ, DDNS, Remote Management, Dynamic or Static Routing, Special Applications, URL blocking, Virtual Servers, SNMP. Supports up to 100,000 concurrent sessions.

**DHCP Server:** The built-in DHCP server assigns up to 253 dynamic IP addresses.

**Access Filter:** Gain fine control over the Internet access and applications available to LAN users. Five (5) user groups are available, and each group can have different access rights.

**Multi DMZ:** Fully supports situations where your ISP allocates multiple IP addresses, up to 8 static IP addresses per port.

**Transparent Bridge Mode:** Used when you would like to locate a firewall or a server behind the router while utilizing the routers load balancing and automatic failover function. Supports multiple IP addresses through the ARP proxy.

**Remote Management:** Full configuration of the router through the internet, you can even upload updated firmware.

**Special Applications:** Used for applications where the port number used for the response is different to the port number used by the sender. Such as online games and chats.

**URL Blocking:** Block access to undesirable Web sites by LAN users.

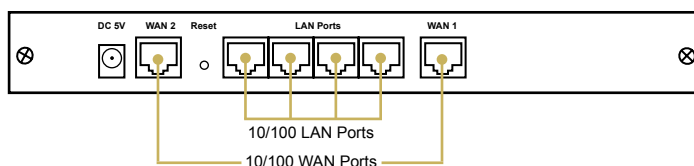
**Virtual Servers:** Allow Internet users to access Internet servers on your LAN. Easy configuration of standard servers such as Web, FTP or E-Mail servers, plus the ability to define you own Server types if required.

**Dynamic DNS:** Dynamic DNS allows use of a Domain name even with a dynamic IP address.

**QoS:** QoS allows you to schedule and direct network traffic to speed up critical applications..

**uPnP:** Universal plug and play for easy connectivity making it more user friendly.

#### Back Panel:



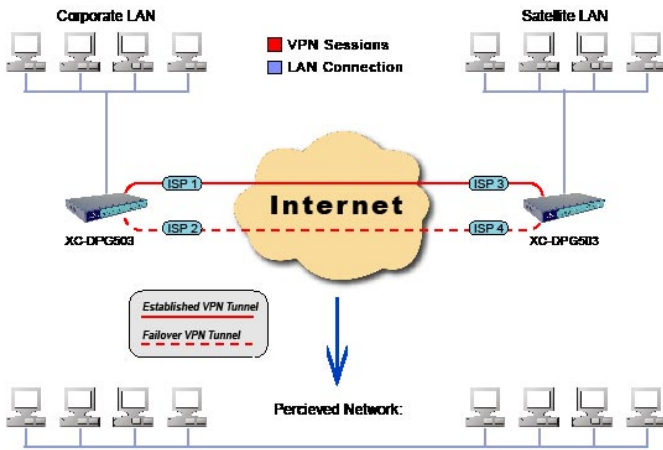
# TWIN WAN VPN GATEWAY

The T1 Alternative™

## How it works:

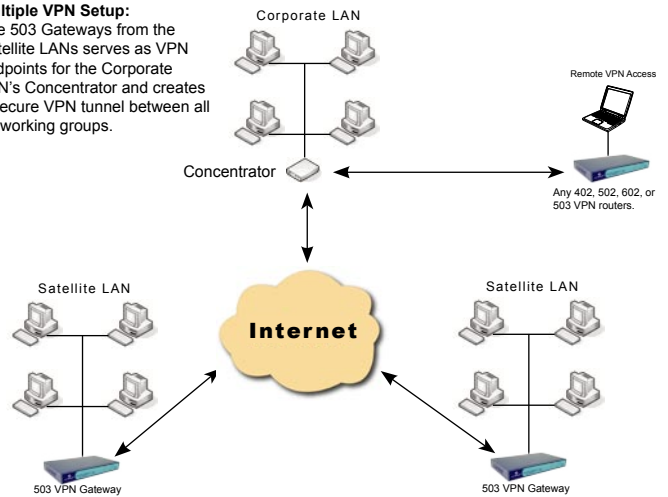
### Basic VPN setup with the 503 gateway:

The 503 VPN Gateways serve as VPN endpoints with Auto Failover capabilities. This creates a secure tunnel and redundant connectivity for a Virtual Private Network.



### Multiple VPN Setup:

The 503 Gateways from the Satellite LANs serve as VPN endpoints for the Corporate LAN's Concentrator and create a secure VPN tunnel between all networking groups.



## Model XC-DPG503 VPN Technical Specifications

<b>WAN:</b>	2-port 10/100 Mbps RJ45 Auto-MDI/MDIX; 802.3/802.3u
<b>LAN:</b>	4-port 10/100Mbps RJ45 Auto-MDI/MDIX; 802.3/802.3u
<b>Throughput:</b>	Over 44 MBits/sec
<b>Load Balance &amp; Backup:</b>	Outbound load balance by bytes, packet, & session Auto backup connection
<b>Protocols:</b>	Security: NAT, UPAP, CHAP Network: TCP/IP, DHCP, PPP, UPAP, PPPoE, Multi-session PPPoE Routing: static route for WAN & LAN, ICMP, ARP Proxy, HTTP, RIP I/II Connection: static IP, dynamic IP, PPPoE, PPTP
<b>VPN:</b>	IPSec Tunnels: 50 Encryption: DES(56-bit), 3DES(168-bit), & AES(128-bit) Authentication: MD5, SHA1, SHA2 Manual key & IKE(Internet Key Exchange) VPN throughput: 10 Mbps
<b>Firewall:</b>	Stateful Packet Inspection NAT (Network Address Translation) NAPT (Network Address Port Translation) DoS (Denial of Service) Access control by group Ping to Death ICMP filter for WAN Packet filter URL block
<b>Security:</b>	Admin passwords Authentication with UPAP and CHAP for PPPoE

<b>Management:</b>	Management through WAN & LAN port HTTP web based management Email alert of disconnection
<b>Firmware Upgrade:</b>	HTTP web based download TFTP download
<b>Applications:</b>	Support MSN & Net meeting Support with H.323 VoIP products Multi-session PPPoE SMTP bind SNMP NAT status & connection list Virtual server Multi-DMZ MTU changeable for WAN Dial-on-demand & Auto-disconnect Dynamic DNS MAC address clone Transparent Bridge Mode
<b>Hardware:</b>	RISC 166Mhz Processor 1Mb Flash memory 16Mb RAM
<b>Supported OS:</b>	Win98 / Win2000 / WinMe / WinXP / MAC / Linux
<b>Power:</b>	External Power Adapter (5Vdc@1A)
<b>Operating Environment:</b>	32°F (0°C) to 104°F (40°C)
<b>Storage Temperature:</b>	14°F (-10°C) to 158°F (70°C)
<b>Certification:</b>	FCC Class B; CE
<b>Dimensions/Weight:</b>	9.63in / 244mm (W) x 5.63in / 143mm (D) x 1.18in / 30mm (H) / 1.15lbs / 521g (wt.)

## XiNCOM Corporation

XiNCOM is an award winning developer and manufacturer of network, broadband, digital electronics, voice and data communications solutions for the digital home, Small Office/ Home Office (SOHO), Small to Medium Business (SMB), and Workgroup to Enterprise environments.

XiNCOM CORPORATION  
2750 Industrial Ave  
Hubbard, OR 97032 USA  
Tel: 1-503-982-1328  
Fax: 1-503-982-1338  
Email: sales@xincom.com  
Web: [www.xincom.com](http://www.xincom.com)

Specifications are subject to change without notice. The Xincm logo, company name, the T1 Alternative, and cutting edge innovations are trademarks or registered trademarks of Xincm, Inc. in the United States and/or certain other countries. Information is subject to change without notice. Copyright © 2003 Xincm, Inc. All rights reserved.



**XiNCOM**®