



# bonalinx-W 1310

## Wireless Service Gateway

bonalinx-W 1310 is an all-in-one wireless service gateway, specially designed for Hotspot and Small Office/Home Office (SOHO) environments. It integrates "access control" and "high-speed secure wireless connection" into one system to fulfill the needs demanded by a public wireless network. The dual-mode 802.11b/g bonalinx-W 1310 can immediately achieve compatibility with current network configurations, making it an ideal choice for small wireless network operators.

### Easy Installation and Operation

- Supports various broadband options (T1, DSL, Cable) via static IP, DHCP and PPPoE
- Integrated access point enables Wi-Fi access and eliminates the need for additional device
- Built-in user database provide sufficient account capacity for different operation scenarios
- Works with instant account generator to provide user accounts for visitor-based, on-demand operations

### Effective User Management

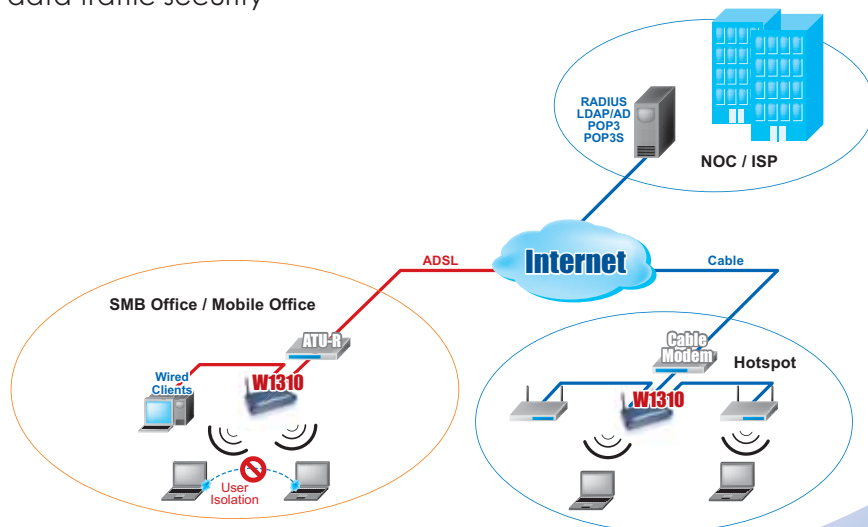
- Complete authentication mechanism blocks unauthenticated users from access to the network
- Role-based and policy-based control policies enhances the protection against malicious users
- "On-line user list" monitors real-time status of each individual user
- Allows session expiration control for guest or on-demand users by time and data volume

### Integrated Security Features

- Integrated user authentication: WEP, WPA, IEEE 802.1x
- Secure guest and administrator access using web-based login and administration over SSL
- Standards-based encryption capabilities ensure privacy to user's device
- Configurable packet filtering policies enhance data traffic security

### Flexible Accounting and Billing

- Programmable billing profiles allow operators to customize the billing plans for on-demand users
- Bandwidth control enables class of service for different levels of users and maximize profits
- Detailed per-user traffic history log for analysis and record keeping
- Billing report gives a summary of transaction records for on-demand users



## Networking

- Wi-Fi standard: IEEE 802.11b/g
- Supports Router, NAT mode
- Supports Static IP, DHCP, PPPoE, PPTP Dial-up
- Configurable LAN ports authentication
- Supports IP Plug and Play (IP PnP)
- Supports Inter-subnet roaming
- Built-in DHCP Server and supports DHCP relay
- Supports NAT:
  - (a) IP/Port Destination Redirection
  - (b) DMZ Server Mapping
  - (c) Virtual Server Mapping
  - (d) H.323 Pass-Through
- Configurable static route
- Supports Walled Garden (free surfing zone)
- Supports MAC Address Pass-Through
- Supports HTTP Proxy
- Throughput: 90 Mbps

## Security

- Supports data encryption: WEP (64/128-bit), WPA
- Supports authentication: WPA-PSK, IEEE 802.1x (EAP-MD5, EAP-TLS, CHAP, PEAP)
- Supports packet filtering policy
- Supports VPN Pass-Through (IPSec and PPTP)
- Supports DoS attack protection
- Supports SSH Remote Management
- Supports Layer 2 isolation
- Supports MAC Access Control List
- Configurable user Black List
- Allows MAC address and user identity binding for local user authentication

## User Management

- Supports up to 50 concurrent users
- Supports 500 local accounts
- Supports 2,000 on-demand accounts
- Provides guest accounts
- Simultaneous support for multiple authentication methods (Local and On-demand accounts, POP3(S), LDAP, RADIUS, NT Domain server)
- Role-based and policy-based access control (per-role assignments based on Firewall Policies, Routing, Login Schedule, Bandwidth, Quota, and Session Time)

## User Session Management:

- (a) SSL protected login portal page
- (b) Supports multiple logins with one single account
- (c) Session idle timer
- (d) Session/account expiration control
- (e) Friendly notification email to provide a quick hyperlink to login portal page
- (f) Windows domain single sign on
- (g) Configurable login time frame

## Accounting and Billing

- Provides built-in billing profiles for on-demand accounts
- Enables session expiration control for on-demand accounts by time (hour) and data volume (MB)
- Provides billing report on screen for on-demand accounts
- Detailed per-user traffic history based on time and data volume for both local and on-demand accounts
- Provides traffic history report in an automatic email to administrator

## System Administration

- Multi-lingual, web-based management UI
- Customizable login and logout portal page
- Supports SNMP v2
- Remote firmware upgrade
- Supports NTP time synchronization
- Console CLI support
- Backup and restore of system configuration

## Hardware Specifications

- Dimensions (W x D x H): 240 mm x 145 mm x 40 mm
- Weight: 1.1 Kg
- Operating Temperature: 5~45 °C
- Power: 110~240 VAC, 50/60 Hz
- Wireless Interface: 1 x 802.11b/g (11/54 Mbps)
- WAN Ports: 1 x 10BASE-T/100BASE-TX RJ-45
- LAN Ports: 4 x 10BASE-T/100BASE-TX RJ-45
- Console Port: 1 x RJ-11
- Certifications: CE, FCC

© 2006 Cipherium Systems, Co., Ltd. All rights reserved