

## TWIN WAN ROUTER Model XC-DPG402

### The T1 Alternative™

XiNCOM's Broadband Products are the highest quality, most durable constructed routers on the market today. We strive to manufacture the latest technology to be compatible with and surpass today's demanding and ever changing Broadband industry.

#### Overview

The XiNCOM XC-DPG402 provides a secure and reliable connection to the Internet and corporate network connectivity to small branch offices and small to medium sized businesses. The XC-DPG402 has two WAN ports that allow you to connect two broadband connections of any type, including Cable, DSL and/or T1 for ultimate redundancy, automatic fail-over and load balancing. With features such as NAT, SPI Firewall, DHCP server, and Access filters makes it a must have for any network. This router is also very easy to configure and manage with an HTTP graphical user interface (GUI), remote web management, e-mail Alerts and SNMP protocol. Additionally this router can be used within a network with support for Static Routing and RIP-1/RIP-2 Dynamic Routing.



### XC-DPG402 Features & Benefits

**Multiple Connection Methods:** All popular DSL and Cable Modems and connection methods are supported, including Fixed IP, Dynamic IP, PPPoE, even multiple-session PPPoE.

**4-Port 10/100 Switch:** The XC-DPG402 incorporates a 4-port 10/100 N-Way Ethernet Switch, complete with auto-crossover for easy connection to an existing network.

**SPI Firewall:** Protects your network using advanced Stateful Packet Inspection against hackers and DDoS attacks.

**Load Balancing:** Allows you to use both WAN ports simultaneously, increasing your available bandwidth. You can set load balance type by Packets, Bytes rx+tx and Sessions.

**Advanced NAT Features:** Access Filters, DMZ, DDNS, Remote Management, Dynamic or Static Routing, Special Applications, URL blocking, Virtual Servers, SNMP.

**Access Filter:** Gain fine control over the Internet access and applications available to LAN users. Five (5) user groups are available, and each group can have different access rights.

**Multi DMZ:** Fully supports situations where your ISP allocates multiple IP addresses, up to 8 static IP addresses per port.

**Remote Management:** Full configuration of the router through the internet, you can even upload updated firmware.

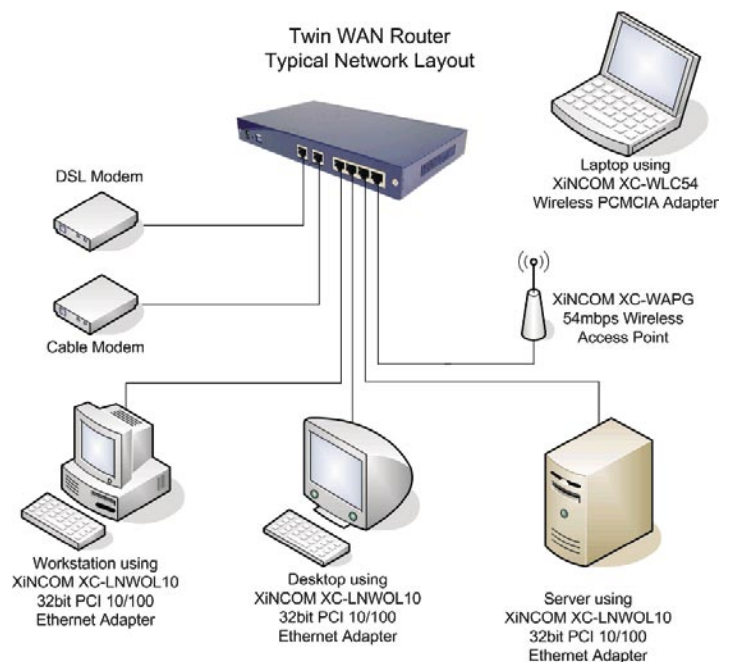
**Special Applications:** Used for applications where the port number used for the response is different to the port number used by the sender. Such as online games and chats.

**URL Blocking:** Block access to undesirable Web sites by LAN users.

**Virtual Servers:** Allow Internet users to access Internet servers on your LAN. Easy configuration of standard servers such as Web, FTP or E-Mail servers, plus the ability to define you own Server types if required.

**Dynamic DNS:** Dynamic DNS allows use of a Domain name even with a dynamic IP address.

#### How it works:



# TWIN WAN ROUTER

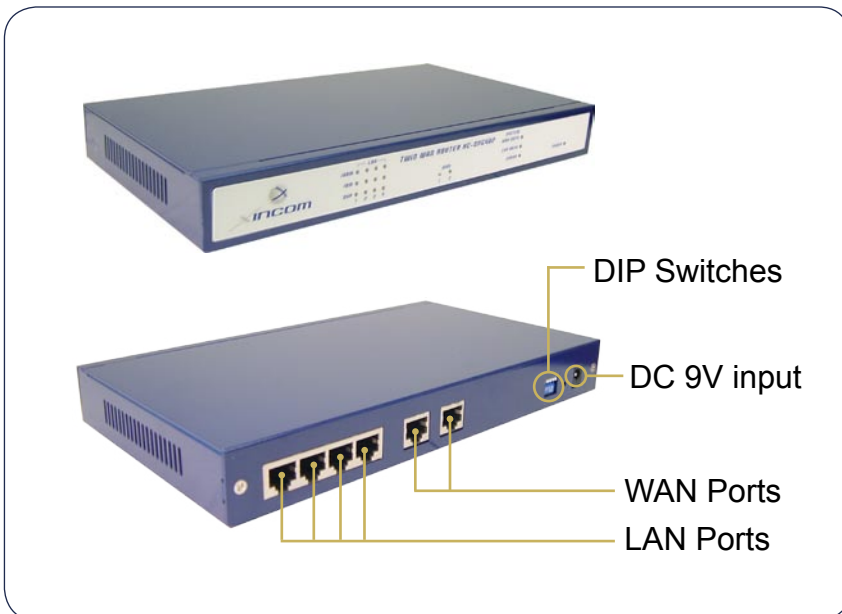
The T1 Alternative

## Model XC-DPG402 Technical Specifications

<b>WAN:</b>	2-port 10Mbps RJ45 Auto-MDI/MDIX; 802.3/802.3u
<b>LAN:</b>	4-port 10/100Mbps RJ45 Auto-MDI/MDIX; 802.3/802.3u
<b>Throughput:</b>	Over 12 MBits/sec
<b>Load Balance &amp; Backup:</b>	Outbound load balance by bytes, packet, & session Auto backup connection
<b>Protocols:</b>	Security: NAT, UPAP, CHAP Network: TCP/IP, DHCP, PPP, UPAP, PPPoE, Multi-session PPPoE Routing: static route for WAN & LAN, ICMP, ARP Proxy, HTTP, RIP I/II Connection: static IP, dynamic IP, PPPoE, PPTP
<b>VPN:</b>	Pass through support for IPSEC, PPTP, and L2TP PPTP client
<b>Firewall:</b>	Stateful Packet Inspection NAT (Network Address Translation) NAPT (Network Address Port Translation) DoS (Denial of Service) Access control by group Ping to Death ICMP filter for WAN Packet filter URL block
<b>Security:</b>	Admin passwords Authentication with UPAP and CHAP for PPPoE
<b>Management:</b>	Management through WAN & LAN port HTTP web based management Email alert of disconnection

<b>Firmware Upgrade:</b>	HTTP web based download TFTP download
<b>Applications:</b>	Support MSN & Net meeting Support with H.323 VoIP products Multi-session PPPoE SMTP bind SNMP NAT status & connection list Virtual server Multi-DMZ MTU changeable for WAN Dial-on-demand & Auto-disconnect Dynamic DNS MAC address clone Transparent Bridge Mode
<b>Supported OS:</b>	Win98 / Win2000 / WinMe / WinXP / MAC / Linux
<b>Power:</b>	External Power Adapter (9Vdc@1A)
<b>Operating Environment:</b>	32°F (0°C) to 104°F (40°C)
<b>Storage Temperature:</b>	14°F (-10°C) to 158°F (70°C)
<b>Certification:</b>	FCC Class B; CE
<b>Dimensions/Weight:</b>	9.63in / 244mm (W) x 5.63in / 143mm (D) x 1.18in / 30mm (H) / 1.15lbs / 521g (wt.)

### Front & Rear View



Specifications are subject to change without notice. The XINCOM logo, company name, the T1 Alternative, and cutting edge innovations are trademarks or registered trademarks of XINCOM, Inc. in the United States and/or certain other countries. Information is subject to change without notice. Copyright © 2003 XINCOM, Inc. All rights reserved.

### XINCOM Corporation

XINCOM is an award winning developer and manufacturer of network, broadband, digital electronics, voice and data communications solutions for the digital home, Small Office/Home Office (SOHO), Small to Medium Business (SMB), and Workgroup to Enterprise environments.

XINCOM CORPORATION  
2840 Industrial Ave  
Hubbard, OR 97032 USA  
Tel: 1-503-982-1328  
Fax: 1-503-982-1338  
Email: [sales@xincom.com](mailto:sales@xincom.com)  
Web: [www.xincom.com](http://www.xincom.com)

