

ARTDio

Voice Internet Phone Gateway



User Manual

IPH 1000 Series

Version:1.2 Update:2004/1/2

ARTDio Company Inc.

1. Safety Instructions

1. Do not attempt to tear or fix the product without a specialist; otherwise, there may be unexpected damage, fire, or electric shock due to any improper or wrongful action.
2. Do not put any metal objects such as pins and wires, or your fingers into vents and gaps since it might cause electric shock and certain harm.
3. Do not rip, twist, extend the power cord/cable, or place it under any heavy objects; otherwise, it might cause fire or electric shock due to the damage of the power cord.
4. The product should be connected to a suitable/compatible power supply with appropriate voltage as marked on the product; otherwise, it might cause fire or electric shock.
5. Please keep children away from the disposable plastic covering in order to prevent children from choking by placing the plastic covering close to nose or mouth.
6. The phone line from wall plug should always be connected to the "LINE" socket. It should not be connected to the "PHONE" socket as it may cause damage to the product.
7. Please read through the instructions before using this product.

Table of Contents

- 1. SAFETY INSTRUCTIONS 2**

- 2. INTRODUCTION..... 6**
 - 2.1 The ARTDIO VoIP gateway.....6
 - 2.2. Features6
 - 2.3. Package Contents8
 - 2.4. System Recommendations8

- 3. GETTING TO KNOW THE ARTDIO VOIP GATEWAY 9**
 - 3.1. ARTDIO IPH-102’s Front Panel9
 - 3.2. ARTDIO IPH-102’s Back Panel10

- 4. INFORMATION REQUIRED BEFORE INSTALLATION..... 11**
 - 4.1. Telephone number and Area Code..... 11
 - 4.2. IP Address 11
 - 4.3. Password for Web Based Management12

- 5. INSTALLATION AND PARAMETERS CONFIGURATION 13**
 - 5.1. Notice for Cable Modem users13
 - 5.2. Hardware installation13
 - 5.2.1 Connection Type 1: With an IP Sharing Device 15
 - 5.2.2. Connection Type 2: Without an IP Sharing Device 15
 - 5.2.3. Connection Type 3: Connected in the office..... 16
 - 5.3. Parameters Configuration16
 - 5.3.1. Step 1: Set the Regional ID 16
 - 5.3.2. Step 2: IP Setting 19
 - 5.4.1. Configuring the Phone Number.....27
 - 5.4.2. Disabling Auto Answer..... 27

5.4.3. PBX CO line access (trunk access code) configuration.....	29
5.4 Inspection	29
6. PLACING IP CALLS.....	33
6.1. Phone Book and IP Searching	33
6.1.1. When the IP information stored in the dynamic phone book is no longer correct.....	34
6.2. Voice Calls	34
6.2.1. Making traditional phone calls (through your local PSTN)	34
6.2.2. Making IP calls between ARTDIO IPHs	35
6.2.3. Outbound Transit Calls (Placing calls from ARTDIO IPH to a traditional phone line via another ARTDIO IPH).....	35
6.2.4. Inbound Transit Calls	36
6.3. Sending Faxes over an IP network.....	37
6.3.1. Sending Faxes between ARTDIO IPHs over an IP network.....	37
6.3.2. Use Outbound Transit to Send Faxes	37
6.3.3. Use Inbound Transit to Send Faxes	37
7. SPECIAL CONDITIONS	38
7.1. Use a Private IP Address in a NAT Environment	38
7.2. Firewall.....	38
7.3. Bypassing the ARTDIO IPH.....	38
8. WEB BASED MANAGEMENT	40
8.1. Acquiring the ARTDIO IPH's IP Address.....	40
8.2. Accessing the Web Based Management Interface.....	40
9. APPENDIX.....	42
9.1. Appendix A: Manual IP Searching Procedure	42
9.2. Appendix B: Automatic IP Searching Procedure.....	43
9.3. Appendix C: Edit the phone book.....	45
9.3.1. Use the Web Based Management interface to edit the static phone book.....	45

9.3.2. Move a dynamic phone book entry to the static phone book46

9.4. Appendix D: Enabling/disabling the automatic answer mode.....46

9.5. Appendix E: Phone Set Command Codes and Parameters.48

9.6. Specifications52

9.7. Unit Mounting Dimension54

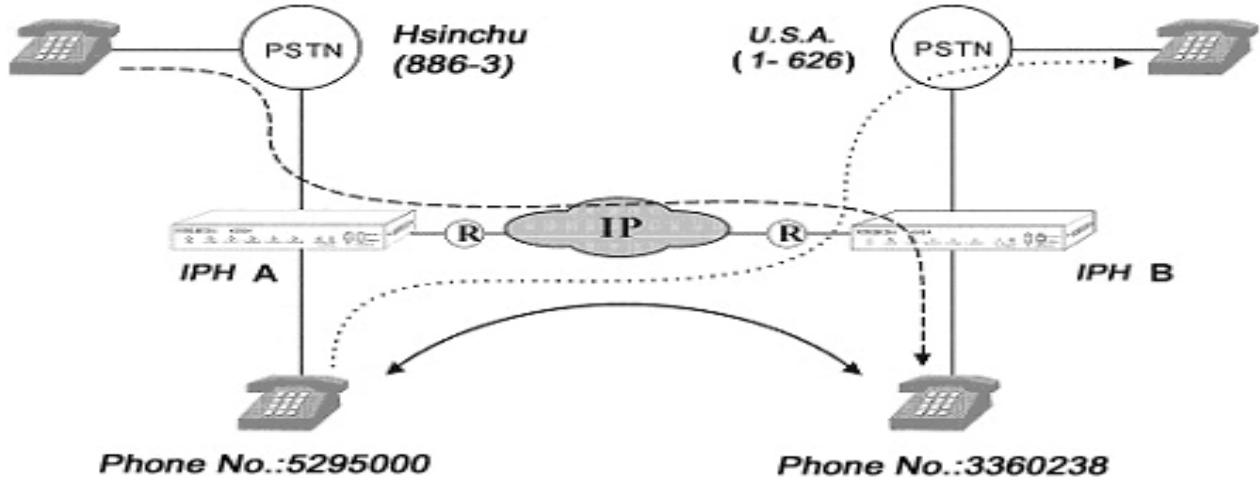
2. Introduction

2.1 The ARTDIO VoIP gateway

Congratulations on your purchase of an ARTDIO VoIP gateway. The new ARTDIO VoIP is developed with the latest VoIP technology. Equipped with QoS capability, ARTDIO VoIP delivers high-quality IP voice and fully integrated communications with limited bandwidth. Most important of all, it is portable with high agility and easy installation.

2.2. Features

As long as you have high speed internet access, ARTDIO IPH adds an IP function to the regular phone with a simple dial and talk step. By attaching the two IPH devices to the phone lines, you can start to make phone calls without any hazel. When you want to make IP phone calls, simply dial the “*” or “#” and the same phone number normally used with a “#” followed. Once both of parties are equipped with ARTDIO IPHs, you will have unlimited connection with the other party totally free.



Besides the ability to make free phone calls through Internet, ARTDIO IPH also provides the following unique features:

You could always use the ARTDIO IPH to place calls even when you are not right next to the device.

When you are away from home, you can still use ARTDIO IPH to place calls to people who also have ARTDIO IPH. Simply use a standard phone or even a mobile phone to call ARTDIO IPH located at your house, ARTDIO IPH will then transfer your calls through the IP network to the remote ARTDIO IPH which is located at your intended recipient's location. In this way, you only have to afford local call expenses.

Make long distance calls while paying local phone bills

If you were lived in Los Angeles, you can make a phone call to anyone located in New York area through another ARTDIO IPH located in New York. Because there is no cost involved when placing a call through ARTDIO IPH in Los Angeles to ARTDIO IPH in New York, Again, you will only be charged for local calls.

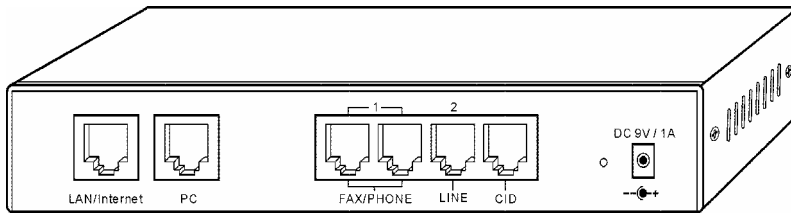
2.3. Package Contents

1. ARTDIO IPH-102 Personal VoIP Gateway
2. AC/DC Power Adapter
3. RJ-45 Ethernet Cable
4. RJ-11 Telephone Cable
5. Quick Installation Guide
6. CD-ROM

2.4. System Recommendations

A broadband networking (Cable modem, DSL, or T1) is required to ensure voice quality, and in order to simplify installation, a Router is recommended.

3.2. ARTDIO IPH-102's Back Panel



Ports

LAN/Internet	Your Modem connect to (RJ-45 cable)
PC	Connects your PC to operate manually
FAX/PHONE	Connects your phone set or FAX machine
LINE	Connects to the phone line to the wall outlet
CID	Can be connected to a Caller ID machine
DC 9V/1A	Connects to AC/DC power adapter

4. Information required before installation

You need to prepare the following information before installing ARTDIO IPH.

4.1. Telephone number and Area Code

A telephone number is required. ARTDIO IPH must be configured with a phone number, and area code that your phone line belongs to, such as 213 for Los Angeles, 708 for New York, 408 for San Jose and 202 for Washington DC, etc....

4.2. IP Address

ARTDIO IPH requires an IP Address for operation. Before installation, you need to know how to get an IP address. Static IP, DHCP IP or PPPoE IP can be used. The following table helps you to decide what information you need. If your ISP offers static IP, you may need to obtain an IP from MIS personnel in order to prevent an IP conflict. DHCP IP (most cable broadband providers' offer) and PPPoE IP (most ADSL broadband providers' offer) will work fine.

IP Environment		Requiring information
Static IP	Public IP Address	IP Address Subnet Mask Default Gateway
	PrivateIP Address	IP Address Subnet Mask Default Gateway The private IP Address requires an IP Sharing device, like a Router, and you must configure the IP Sharing device to treat ARTDIO IPH and the IP Address as a virtual server.
Dynamic Host Configuration Protocol (DHCP)		Enable DHCP mode
PPPoE		Account Number Password This information is normally provided by your ISP. If you don't have this information, please contact your ISP.

4.3. Password for Web Based Management

You will need to prepare a password for Web Based Management. It can be digits, letters or combination ranging from 1 to 6 digits (E.g. 123). You will need this password to access the web Management Interface (browser based). If you don't set this password, you will not have right to access the Web Management Interface.

5. Installation and parameters Configuration

After preparing the information that you need as specified in section 4, follow the steps below to install ARTDIO IPH

5.1. Notice for Cable Modem users

Most Cable ISP's usually offer DHCP to their customers, allowing only one PC to access the Internet. Because of this, Cable ISP's request that their customers register their LAN card's MAC address. Only the PC using a registered MAC address is allowed to access the Internet, so it is essential that you use an IP sharing device to connect to your Cable Modem instead, and connect the PC and ARTDIO IPH unit to your IP sharing device. After you have connected the PC and ARTDIO IPH unit to your IP sharing device, turn off your Cable Modem and the IP sharing device, and re-turn on again, it will re-register your MAC Address of the IP sharing device automatically. Because you will be using an IP Sharing device, you will need to set the IP Sharing device to treat the ARTDIO IPH unit's UDP port 2000 as a Virtual Server.

5.2. Hardware installation

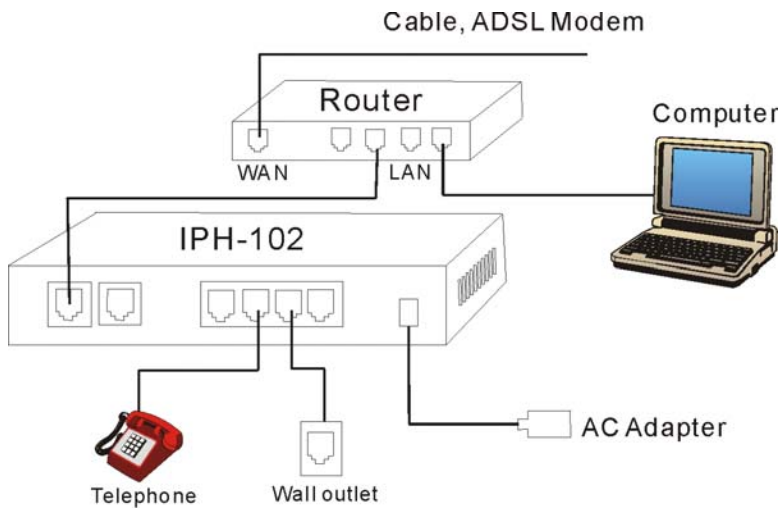
When you connect ARTDIO IPH to your network, network environments are usually different in various situations. The Following three sections list most of the popular connections; you can select one that fits your existing network's configuration the most. This user guide lists the most common connection types for your reference.

ISP Environment	Suggested Connection
Connection type 1 : With an IP sharing device	This type of connection is used when you are using an IP Sharing device, like Router. You have it or with HUB for ARTDIO IPH and serious PC. You must configure ARTDIO IPH as a Virtual Server on the IP Sharing device.
Connection type 2 : Without an IP sharing device	This type of connection connects ARTDIO IPH to an ADSL Modem or Cable Modem directly. Usually it connects a Hub to ARTDIO IPH and PCs, However, your ISP must allow at least two accounts to access the Internet at the same time.
Connection type 3 : Connected in the office	This type of connection is that the ARTDIO IPH is installed in your office. <i>It won't work if your PBX extension line is digital or part of a Key Telephone System.</i> A lot of enterprises use firewalls on their networks. You will need to ask MIS personnel to open UDP ports as specified in section 7.2. Firewall

You can connect a telephone to either port of the “FAX/PHONE” socket. If you have a FAX machine it can be connected to the “FAX/PHONE” socket that is not being used. Since the “FAX/PHONE” ports are wired inside ARTDIO IPH itself, the FAX and PHONE can not be used at the same time. The “LINE” port should be connected to the phone line. The “CID” socket can be used to connect a Caller ID device to display the phone number of incoming calls.

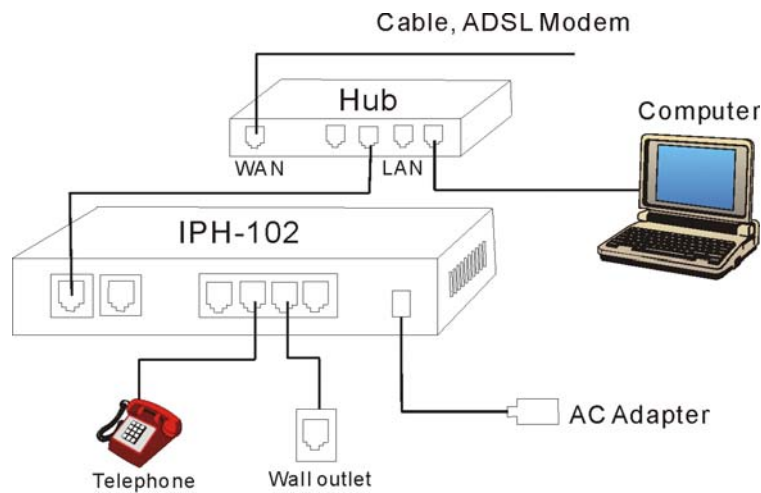
5.2.1 Connection Type 1: With an IP Sharing Device

Use the RJ-45 cable to connect “LAN/Internet” socket of your device with the Router, wait until ”CPU/ACT” LED on the front panel is on, the hardware installation has done.



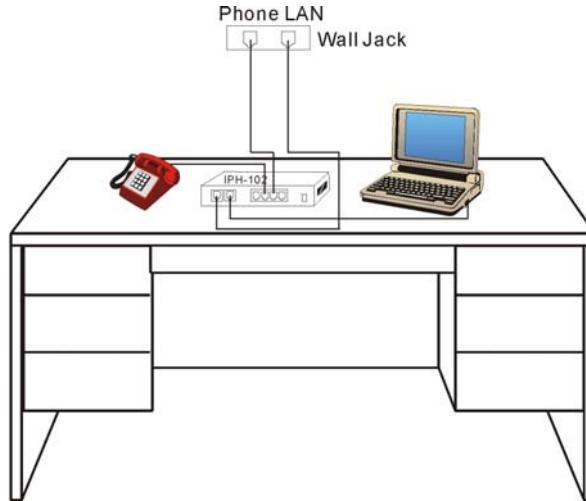
5.2.2. Connection Type 2: Without an IP Sharing Device

Use the RJ-45 cable to connect “LAN/Internet” socket of your device with the Hub. Connect the power adapter, wait until”CPU/ACT” LED on the front panel is on, the hardware installation has done.



5.2.3. Connection Type 3: Connected in the office

Use the RJ-45 cable to connect “LAN/Internet” socket of your device with the LAN wall jack. Connect the power adapter, wait until “CPU/ACT” LED on the front panel is on, the hardware installation has done.



5.3. Parameters Configuration

We recommend that you use telephone to do the configurations, as using a phone set to do the configurations is the easiest way.

5.3.1. Step 1: Set the Regional ID

The default Regional ID is printed on the label located at the bottom of the device, showing similar as like below:

MODEL NAME:	XXXXXX
PRODUCT S/N:	XXXXXXXXXXXXXXXXXXXX 1
MAC ADDRESS:	XXXXXXXXXXXX
Input Rating :	9V / 0.5A DC
This unit complies with Part 15 & 68 of FCC Rules.	
FCC REG.NO: US: VTLMF08B0024202A	
REN: 0.6B	
USOC JACK: RJ11C	Operation is subject to following two conditions: (1) This device may not cause harmful interference (2) This device must accept any interference received, including interference that may cause undesired operation.
Region : XXXX	
MADE IN TAIWAN 61300000460C	

If you are installing the device in the default region, skip to next step.

5.3.1.1. The Regional ID is on the List

If you are installing the device at the region other than the regional ID specified on the label but it's in the list below, you need to modify the device to the right Regional ID.

The Regional ID is defined as follows:

ID NO.	Country	ID NO.	Country	ID NO.	Country	ID NO.	Country
01	Argentina	02	Australia	03	Philippines	04	Portugal
05	Brazil	06	Canada	07	China	08	Russia
09	Sweden	10	Vietnam	12	France	13	Germany
15	Hong Kong	18	India	22	Italy	23	Japan
24	Korea	26	Malaysia	27	Mexico	28	Netherlands
29	New Zealand	36	Singapore	38	Slovenia	39	South Africa
40	Spain	42	Switzerland	43	Taiwan	44	Thailand
46	British	47	USA	60	Iran	61	Dubai

When the "CPU/ACT" LED is on, pick up the handset and dial as follows:

1. ##0000 : to start the configuring mode
2. 9547# : assume you are modifying for U.S.A.
3. 971# : resets the device to factory default except the regional ID
4. Hang up the phone.

The device will be reset to the new regional ID after the "CPU/ACT" LED is on again.

5.3.1.2. The Regional ID is not in the List

If you are installing the device at the region not in the regional ID list, then you need to connect a PC to modify the information to fit your region. Use the provided Ethernet cable to connect your PC to the port labeled "PC", located on the rear panel of ARTDIO IPH.

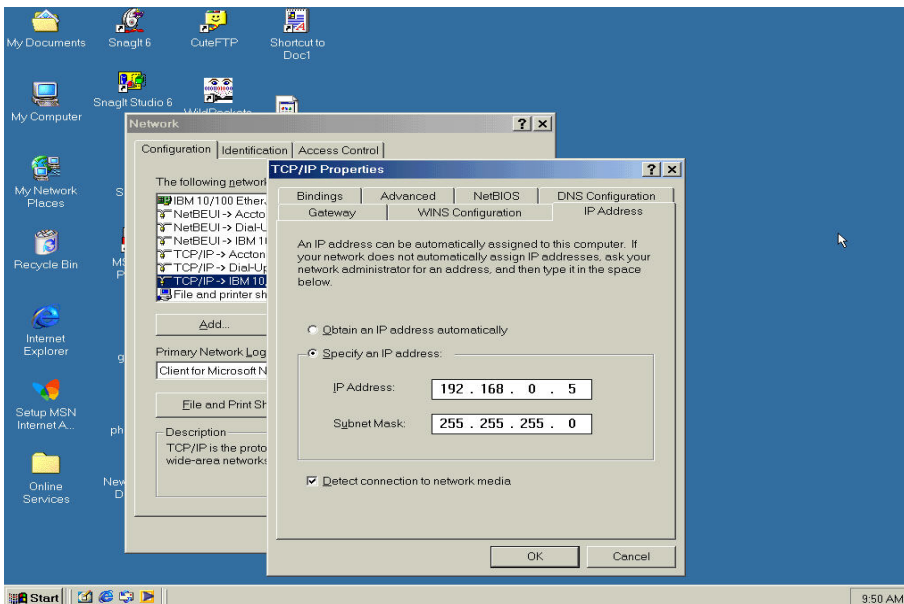
First: Use a phone set to configure the Web Management Password

When the “CPU/ACT” LED is on, pick up the handset and dial as follows:

1. ##0000 ; to start the configuring mode
2. 88123# ; “123” is the Web Management password
3. 981# ; restarts to update information
4. Hang up the handset.

Second: Configure Country Code, International Code and Long Distance Code

Because ARTDIO IPH’s default IP setting is 192.168.0.2, you must configure your PC to the same Subnet. 192.168.0. X for example. The following example uses 192.168.0.5 for the IP Address and 255.255.255.0 for the Subnet Mask



After you have completed the PC’s IP Address setting, restart the PC to let the new settings take affect.

On the PC which is connected to ARTDIO IPH, enter ARTDIO IPH’s IP Address (Default 192.168.0.2) and press enter. ARTDIO IPH will prompt you with a dialogue box requesting that you enter a password. Use “WEB” (all capitals) for the User field, and “123” for the password field that you have previously configured. Click the “OK” button to access ARTDIO IPH Web Based Management Interface page

1. Click on “BASIC” at the top of the page and you will see the page as shown in the following image.
2. Change the “Country Code” under “My Phone Number” to your country code.
3. Click on the “Apply” button.
4. Click on “ACCESS CODE” at the top of the page.
5. Add your international code and long distance code in.

6. Click on the “Apply” button again.
7. Click on “BASIC” at the top of the page again, Select “Warm Start” to restart the system.

After the “CPU/ACT”LED is on again, ARTDIO IPH will have your regional ID settings ready, and you can have your PC removed.



5.3.2. Step 2: IP Setting

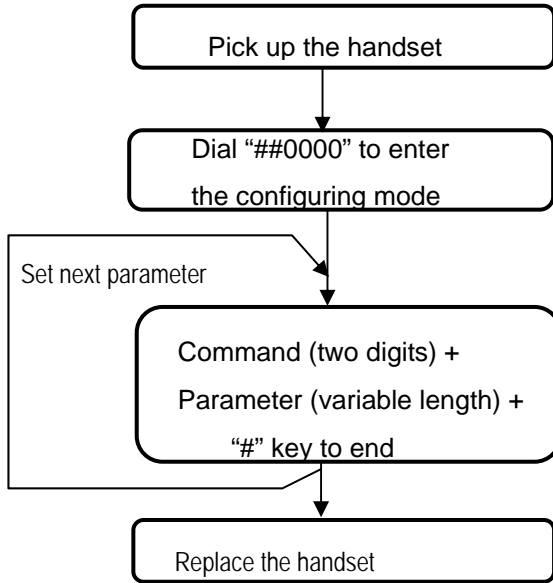
If you are using a static IP or DHCP, you can configure the IP address by using your phone set directly. If you are using a PPPoE service, you have to configure the account number and password by using the Browser Based Interface as the phone set does not accept alphabetic characters.

The following two sections contain the procedures used to configure ARTDIO IPH according to how you get your IP address (Static IP; DHCP or PPPoE).

Since a lot of the configuring procedures in the following sections are using a telephone to modify the settings. Configuring ARTDIO IPH via the phone set will be described first.

Using a Telephone to Configure ARTDIO IPH

Follow the steps specified on the following figures:



Every time you set parameters, press the “#” key to complete it, a successful setting will be confirmed by three equal beeps in succession. If your settings were not succeeded you will be prompted with one long beep.

The Command length is two-digits long. For example, configure “area code” is “01”, “phone number” is “02”, and “restart” is “98”, etc... For details please refer to section 9.5. Appendix E: Phone Set Command Codes and Parameters.

5.3.2.1 Static IP

If you are using a static IP, you need to prepare the information as specified in section 4.2. IP Address, as an example as below:

Area Code	626 (Los Angeles)
Phone Number	4453447
IP Address	210.67.96.121
Subnet Mask	255.255.255.248
Default Gateway	210.67.96.120
Web Management Password	123

Use the information above as an example. The procedure is as follows:

When the “CPU/ACT” LED is on, pick up the handset and dial as follows:

1. ##0000 ; to start the configuring mode
2. 01626# ; “626” represents the Los Angeles area code
3. 024453447# ; phone number
4. 030# ; “0” is used to enable “manual” IP mode
5. 04210*67*96*121# ; IP Address

6. 05255*255*255*248# ; Subnet Mask
7. 06210*67*96*120# ; Default Gateway
8. 88123# ; “123” is the Web Management password
9. 981# ; restarts to update information
10. Hang up the handset.

5.3.2.2. DHCP Mode

If you are using DHCP mode, you need to prepare the information as specified in section **4.2. IP Address**, as an example as below:

Area Code	626 (Los Angeles)
Phone Number	4453447
Web Management Password	123

Use the information above as an example. The procedure is as follows:

When the “CPU/ACT” LED is on, pick up the handset and dial as follows:

1. ##0000 ; to start the configuring mode
2. 01626# ; “626” represents the Los Angeles area code
3. 024453447# ; phone number
4. 031# ; “1” is used to enable “automatic” IP mode
5. 88123# ; “123” is the Web Management password
6. 981# ; restarts to update information
7. Hang up the handset.

5.3.2.3. PPPOE

If you are using PPPoE, you need to prepare the information as specified in section **4.2. IP Address**, as an example as below:

Area Code	626 (Los Angeles)
Phone Number	4453447
PPPoE Account	85432102@earthlink.com
PPPoE Password	123456
Web Management Password	123

First: Use a phone set to configure the Web Management Password and phone number

You need to use a web browser to perform the PPPoE settings through ARTDIO IPH's Web Based Management Interface. To enter the Web Based Management you must have previously configured password. Follow the next procedure to setup your password and phone number.

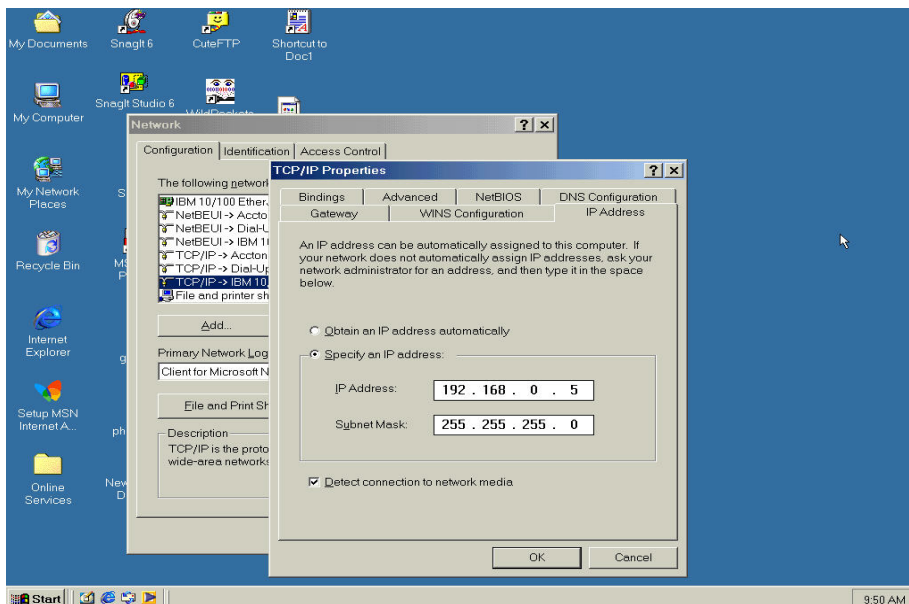
When the "CPU/ACT" LED is on, pick up the handset and dial as follows:

1. ##0000 ; to start the configuring mode
2. 01626# ; "626" represents the Los Angeles area code
3. 024453447# ; phone number
4. 88123 ; "123" is the web management password
5. 981# ; restarts to update information
6. Hang up the handset.

Second : Configure IP Address from your PC

Use the provided Ethernet cable to connect your PC to the port labeled "PC", located on the rear panel of ARTDIO IPH.

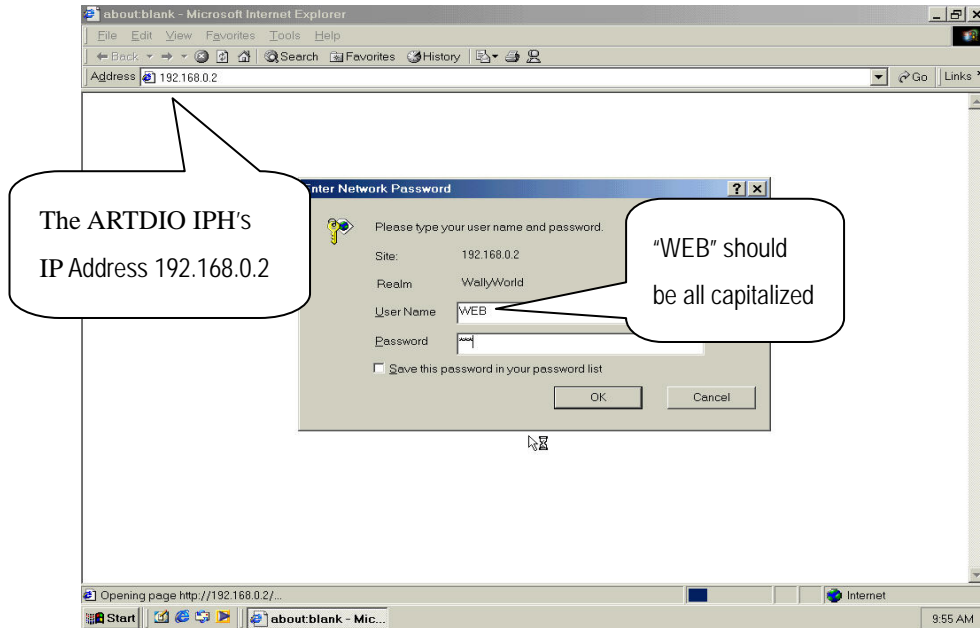
Because ARTDIO IPH's default IP setting is 192.168.0.2, you must configure your PC to the same Subnet. 192.168.0. X for example. The following example uses 192.168.0.5 for the IP Address and 255.255.255.0 for the Subnet Mask.



After you have completed the PC's IP Address setting, restart the PC to let the new settings take affect.

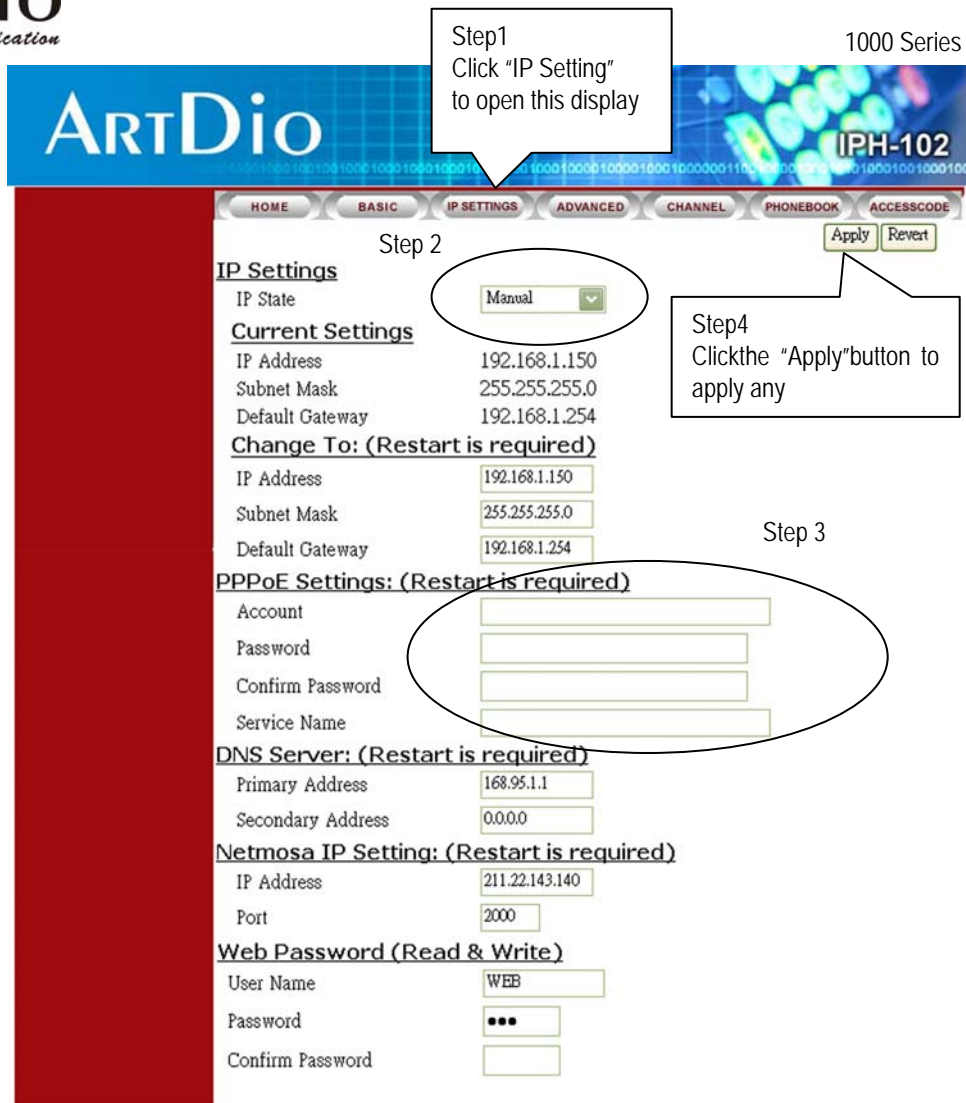
Use the browser to configure the PPPoE Parameters

On the PC which is connected to ARTDIO IPH, enter ARTDIO IPH's IP Address (Default 192.168.0.2) and press enter. ARTDIO IPH will prompt you with a dialogue box requesting that you enter a password. Use "WEB" (all capitals) for the User field, and "123" for the password field that you have previously configured. Click the "OK" button to access ARTDIO IPH Web Based Management Interface page.



Enter Web Based Configuration Interface.

1. Click on "IP SETTING" at the top of the page and you will see the page as shown in the following image.



2. Select PPPoE from the “IP State” pull down menu.
 3. Fill in the “Account”, “Password”, and “Confirm Password” under the PPPoE Settings. You can get this information from your ISP.
 4. Click on the “Apply” button.
 5. Click the “BASIC” button at the top to go to the “BASIC” page. Select “Warm Start” to restart the system.
- After restarting, ARTDIO IPH will use PPPoE to get its’ IP Address.

At this stage, the device should be able to use PPPoE to access the Internet. However, if you configured a wrong account number or password, your ARTDIO IPH can not access the Internet. You can not use PC to access ARTDIO IPH by using the IP address of 192.168.0.2, because ARTDIO IPH has been set in PPPoE mode. You have to use phone set to configure ARTDIO IPH back to a fix IP mode (##0000, 030#) and use PC browser to reconfigure parameters again.

Notice : Be sure to keep ARTDIO IPH and the broadband Modem always on line. Going off line could reduce the IP searching function’s effectiveness.

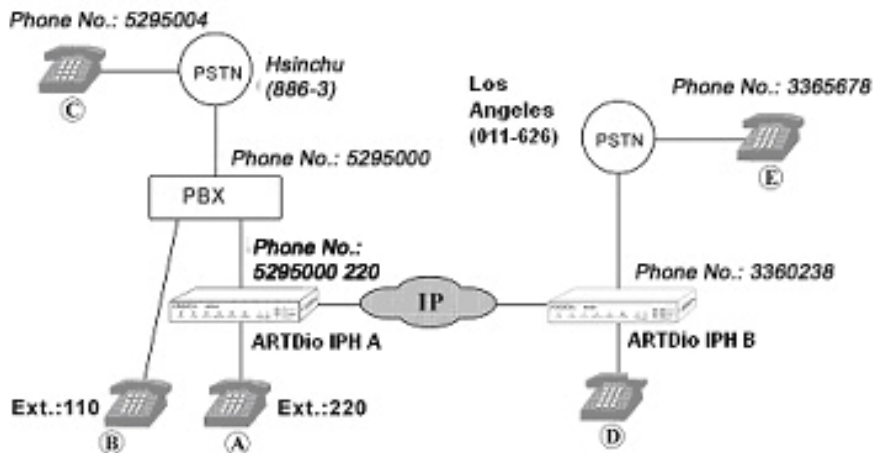
The screenshot displays the web management interface for the ARTDio IPH-102 VoIP Gateway. The interface features a top navigation bar with tabs for HOME, BASIC, IP SETTINGS, ADVANCED, CHANNEL, PHONEBOOK, and ACCESSCODE. Below the navigation bar are 'Apply' and 'Revert' buttons. A left sidebar contains menu items: GENERAL (selected), INBOUND TRANSIT, OUTBOUND TRANSIT, and OFFNET FORWARD. The main content area is divided into several sections:

- Information:** Displays system details such as Region ID (47, U.S.A.), Software Version (2.13), BootRom Version (1.00), Hardware Version (1.00), Card Type (2 PORT_FSO), Up-Time (0 day 1 hr 26 min 10 sec), and MAC Address (00-03-62-01-00-9C).
- Time Configuration:** Includes fields for Time Source (Auto Sync), Date (2002/12/12), Time (12:09:16), Time Zone (Beijing, Hong Kong, Singapore, Taipei), and DayLight Saving (Off).
- Configuration:** Contains settings for Control Port (2000), VoIP Base Port (4000), Greeting Mode (On), and Transit Call (Enable).
- My Phone Number:** Fields for Country Code (886), Area Code, and Phone Number.
- System Restart:** A dropdown menu for Restart Mode (None).

A red circle highlights the 'System Restart' section, with a red arrow pointing to the 'Restart Mode' dropdown and the text 'Step 5.' next to it.

Connecting the ARTDIO IPH to the PBX extension line

The ARTDIO IPH can also be connected to a PBX extension line as shown in the diagram below. **However, the ARTDIO IPH unit does not support the digital line extension type.** The ARTDIO IPH only supports the analog line extension type. The methods for dialing and using are similar to a standard connection. One of the differences is that the phone number that needs to be configured to the ARTDIO IPH should include the extension number. It is also necessary that the PBX access code used to get an external line (the digits to get an external line), should be configured too. As the following example shows, the PBX phone number is 5295000 and the extension number is 220. So ARTDIO IPH unit A should be configured to 5295000220.



5.4.1. Configuring the Phone Number

When connecting the ARTDIO IPH to a PBX extension line, the phone number must be configured according to the following:

The PBX line number + the extension number

As shown in the figure above, the PBX phone number is 5295000 and the extension number is 220, ARTDIO IPH A should then be configured to 5295000220.

5.4.2. Disabling Auto Answer

Because the ARTDIO IPH is connected to an extension line of the office PBX, it is recommended that you disable the automatic answering function (the factory default value is "Disable"). Please note that automatic IP Searching is not supported when the ARTDIO IPH is installed under the Office PBX. You must conduct the IP Searching process manually. Please refer to the procedure specified in **9.1. 9.1. Appendix A: Manual IP Searching Procedure**.

Procedures for disabling auto-answer:

Pick up the handset and dial as follows: :

1. ## 0000 ; to start the configuring mode

2. 130# ; to disable the auto-answering function (the factory default value is “Disable”)
3. Hang up your phone

5.4.3. PBX CO line access (trunk access code) configuration

When the ARTDIO IPH is connected to the extension line, you need to configure the PBX CO line access code with your ARTDIO IPH, so that it is able to acquire the external phone line of the PBX automatically. If the access code is not configured, Auto IP Searching and Outbound transit call functions won't work.

You can configure the access code using the phone set. Pick up the handset and dial as follows:

1. ##0000 ; to start the configuring mode
2. 19 9*# ;assuming the prefix code is '9'. The "*" key is used to set one second pause) °
3. Hang up the phone

Length of called phone number on Outbound Transit Calls

If the ARTDIO IPH has been configured with the PBX CO line access code, the ARTDIO IPH will presume that a PBX is connected. For outbound transit calls, it can send to another extension line or pass through the PBX to a normal phone line. If the Outbound Transit call is sent to another extension line, there is no need to include the PBX CO access code. However, if the Outbound Transit calls are sent to a normal phone number, the ARTDIO IPH will need to dial the PBX CO access code before dialing the phone number. When the ARTDIO IPH receives an Outbound Transit Call request from another ARTDIO IPH, it will check the length of the called phone number (excluding the country and area code). If the length is 5 digits or more, the ARTDIO IPH will dial the previously configured PBX CO access code along with the called phone number. Otherwise the ARTDIO IPH will assume that it is an extension call. The PBX CO access code then has no effect.

Please refer to the following example.

The PBX CO access code is set to "9*" on ARTDIO IPH A.

When ARTDIO IPH B dials an Outbound Transit Call via ARTDIO IPH A using #0088635295004#, ARTDIO IPH A will then dial the number "9", then 5295004 after a one second pause (Because the called numbers has 7 digits [5295004]).

When ARTDIO IPH B dials #008863110#, ARTDIO IPH A dials "110" without using the PBX CO access code; because the called numbers is only 3 digits long (110).

5.4 Inspection

After connecting ARTDIO IPH to your network, we strongly suggest that you follow these procedures to check if ARTDIO IPH is working properly.

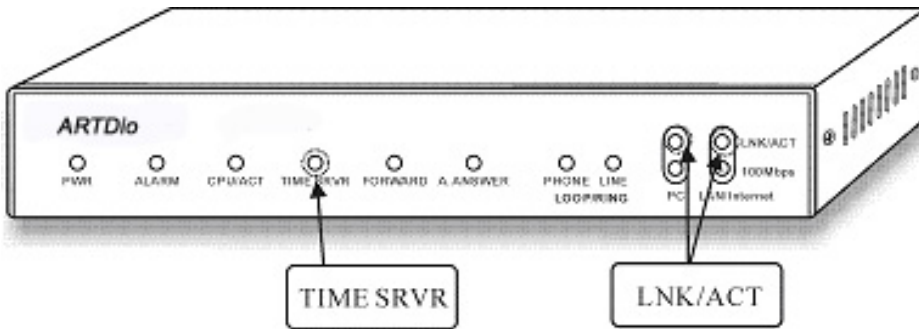
Step 1 : Check the LED of "TIME SRVR" on the front panel

If the "TIME SRVR" LED is on within 1 minutes of initial use, proceed to step 2. Otherwise perform the following procedures.

Check if the ADSL Modem is working. (Does the PC have access to web access?). Check if your Ethernet connection is operating? The “LNK/ACT” LED should be on if the Ethernet link is functioning; otherwise you may need to check your Ethernet cable connections.

Use your web browser to access the device’s Web Based Interface and check if the phone number, IP Address, PPPoE account number and password are configured correctly.

Does your network utilize a Firewall? If so, you should open the ports that ARTDIO IPH is using. Please refer to section **7.2. Firewall** for details.



Step 2 : Dial distributors’ ARTDIO IPH customer service number

Get the phone number and IP Address of distributors’ ARTDIO IPH, and save them into the static phone book. (Please refer to section 9.3.1. **Use the Web Based Management interface to edit the static phone book** for the detail). After the LED of “TIME SRVR” comes on, it indicates that ARTDIO IPH is able to access the Internet. Try to dial the distributor’s ARTDIO IPH number. After one of customer service personnel answers the call, check to see if you are able to talk with them. If you are able to communicate with customer service personnel properly, proceed to step 3.

Most failures involve single way communications. In other words you can hear the call from recipient but the recipient can’t hear you. This happens when your IP Sharing device is used but has not been configured to treat ARTDIO IPH as a Virtual Server. If the Virtual Server has been configured properly on the IP Sharing device, check if the IP (obtained via PPPoE by the sharing device) is a private IP. ARTDIO IPH works fine using a private IP on the LAN side of the IP Sharing device. However it will not work if the IP Sharing device’s WAN side is using a private IP Address. Check the WAN side IP Address to see if it is part of the following IP range. If it is, it is a private IP Address.

Private IP Address range:

- 10.0.0.0 – 10.255.255.255
- 172.16.0.0 – 172.31.255.255
- 192.168.0.0 – 192.168.255.255

If the phone’s volume is too loud, perform the following steps to decrease the volume to a more comfortable level.

Pickup the phone set and dial :

1. ##0000 ; to start the configuring mode
2. 922# ; decrease volume by 2dB

Or 9222# ; decrease volume by 4dB

Or 92222# ; decrease volume by 6dB

3. Hang up the phone and redial to test

Step 3 : Dialing ARTDIO IPH from a traditional phone line or mobile phone

Place a call from a traditional phone line or mobile phone to ARTDIO IPH; go through the following check list. The column titled “solutions” is suggestions to solve the problem.

Check Items	Solutions
Make sure the phone set connected to ARTDIO IPH rings.	If the telephone does not ring and the “LINE” LED located at the rear panel does not flash, please check that if the phone line is connected to the “LINE” port.
The audio volume is too high and the quality is poor	<p style="text-align: center;">Perform the following:</p> <p>##0000 ;Enter Setting Mode</p> <p>922# ; decrease volume by 2dB</p> <p>Or 9222# ; decrease volume by 3dB</p> <p>Or 92222# ; decrease volume by 4dB</p> <p>Hang up the phone and redial.</p>
Under conversion mode, press the digits “1234567” on the phone located at the calling side and see if the phone connected to ARTDIO IPH is able to hear the DTMF sounds.	If you can’t hear the tone, it means that DTMF has been filtered by the central office switches. IP searching and Inbound Transit functions will not be function. Please contact your local telephone company for service.

Step 4 : Use ARTDIO IPH’s phone to make a regular call to remote ARTDIO IPH

If you are not able to reach the remote ARTDIO IPH, please check if the phone line connected to ARTDIO IPH is limited and not able to place long distance calls. The called party’s line may also be busy. Try again later.

Step 5 : Check that the Manual IP Searching function works

Use ARTDIO IPH’s phone to place a regular phone call to a remote ARTDIO IPH. Ask the recipient to press the “#” key twice to enter manual IP Searching mode. If the IP Searching function is unsuccessful, you will hear one long beep, and you may need to adjust the IP Searching sensitivity as followed.

Hang up, and then pick up the phone, dial as follows:

1. ##0000 ; to start the configuring mode
2. 911# ; to increase volume by 2db or
9111# ; to increase volume by 3db or
91111#” ; to increase volume by 4db

Hang up the phone and try to perform the IP Searching function again. If the IP Searching function is successful, you will hear three short beeps.

Step 6 : Use ARTDIO IPH’s phone to place an IP call to remote ARTDIO IPH

(Dial: # + phone number of called party + #)

At this point, you should be able to place IP calls. However, if it does not work, and you hear a busy tone instead, count out how long the busy tone lasts. If the busy tone lasts about 4 seconds, this indicates that there may be network problems. If the busy tone ends soon after it starts, this indicates that the recipient is busy. Try again later.

6. Placing IP calls

Besides ARTDIO IPH's ability to place IP calls, it also does well at maintaining the same method you use to place regular calls. The following table demonstrates how to place both regular and IP based calls.

Dialing Method	Description
Placing traditional Phone Calls	
Phone number	Place traditional phone calls as usual
On-net calls (between two ARTDIO IPH's) and Outbound Transit Calls	
"#" + phone number + "#"	Placing calls through an IP
"#" + phone number + "*"	Sending a fax through an IP
Inbound Transit Calls – Placing a local call from a traditional phone to a local ARTDIO IPH ,then transferring your call to another ARTDIO IPH	
"#" +Inbound Transit password + "#" + phone number + "#"	Using a traditional phone while out to call a remote ARTDIO IPH via your local ARTDIO IPH.
"#" + Inbound Transit password + "#" + phone number + "*"	Use a traditional FAX machine while out to send a FAX to a remote ARTDIO IPH via your local ARTDIO IPH

The leading “#” key represents an IP phone call or an IP fax call. All calls end with the “#” key. This represents a voice call while the “*” key represents a fax call.

6.1. Phone Book and IP Searching

The most remarkable feature of ARTDIO IPH is that it turns your traditional phone call into an IP call. When you make traditional phone calls, dial as usual. When making IP calls, dial as you usually do plus dial a “*” or “#” before dialing the phone number, and end with the “*” or “#” keys. This is because ARTDIO IPH comes with a dynamic phone book built in, keeping all the records of phone numbers and their IP mappings. When a user initiates an IP call, ARTDIO IPH will search the phone book and obtain the phone number's IP automatically. If it is the first time to use a number to place an IP call, you must perform the IP Searching first. The IP Searching will get the phone number and IP mapping of ARTDIO IPH that's connected to the phone line, the mapping will then be stored in the built in phone book. *The phone number and IP information will be saved in flash memory and will be updated every hour.*

When you first begin to use ARTDIO IPH, you must initiate the IP searching process, after IP searching process has completed, your phone number and your friend's phone number will be saved in both ARTDIO IPH's (built in) phone address book. Once you have done the first time searching, dial: “# + phone number + #” for later calling over VoIP.

There are two ways to search the remote IPH's IP Address to make IP calls.

1. Automatic IP Searching Procedure (recommended)

Dial : * + phone number + #

ARTDIO IPH will use the phone line to search the remote ARTDIO IPH and get the IP information back. The phone set connected to the remote ARTDIO IPH will ring until the recipient picks up the phone. When the recipient answers the phone, he/she will hear a busy tone and hang up the phone. At that point, the IP Searching process begins, please do not hang up.

The caller will hear the searching tone (a short beep every two seconds; an unsuccessful searching will respond with a busy tone). If the searching process is successful, ARTDIO IPH will switch to IP call automatically. The called ARTDIO IPH's phone will ring again. When the recipient picks up the phone, the free voice communication over IP call begins.

2. Manual IP Searching Procedure

1. Use the phone connected to ARTDIO IPH to dial the recipient phone number that you are attempting to search.
2. When the recipient answers the phone, ask him/her to press the “#” key twice. The searching process will then begin and both sides should hear the searching tone (a short beep every two seconds).
3. After hearing three consecutive beeps, hang up and dial: # + phone number + # again. You can then begin voice communication over IP.

Three consecutive beeps indicate a successful searching; otherwise you will hear a long beep indicate a failed searching.

For inbound and outbound transit calls, the IP Searching process between the two ARTDIO IPH's must be completed before you can make calls. ARTDIO IPH can not make the IP searching from transit call.

6.1.1. When the IP information stored in the dynamic phone book is no longer correct

After you have completed the IP searching process with the recipient's ARTDIO IPH, in some occasions you might find that the searched IP information is not correct. Usually this happens when the recipient's ARTDIO IPH has changed its IP Address and failed to notify your ARTDIO IPH. The most common occurrence is when the recipient ARTDIO IPH is in the process of sending an IP changing notification to your ARTDIO IPH and your ARTDIO IPH may have been powered off or temporarily unable to access the Internet. If this happens, when you place an IP call using “#” +phone number + “#”, you will always hear a busy tone. In this case, you have to reinitiate the IP Searching process again.

6.2. Voice Calls

6.2.1. Making traditional phone calls (through your local PSTN)

Application: While ARTDIO IPH is connected, you can still use the phone to make traditional phone calls, just dial as before. Examples: 4458275, 3579999, and 011886282263368.

6.2.2. Making IP calls between ARTDIO IPHs

Application: Making IP phone calls between two ARTDIO IPHs.

Dialing Method: “#” + telephone number of the recipient + “#”

Examples: #4458275#, # 3579999#, and #011886282263368#.

6.2.3. Outbound Transit Calls (Placing calls from ARTDIO IPH to a traditional phone line via another ARTDIO IPH)

Application: The dialed phone number must have the same area code as ARTDIO IPH you are calling. Since the called ARTDIO IPH places the (local) call to the called number via a traditional phone line, it will be billed for the cost of a local call.

Dialing Method: “# + phone number of called party + #”

Configuration:

1. IP Searching must previously be completed between both ARTDIO IPHs.
2. Your ARTDIO IPH must also have previously obtained permission from the remote ARTDIO IPH that is attempting to dial through. This means that the remote ARTDIO IPH must configure your telephone number (including your country and area code) and MAC Address into its permissions table.

Using the phone set to configure the permissions

If you wanted to permit the 886-2-82263368 ARTDIO IPH to place outbound transit calls through your ARTDIO IPH, you need to get its MAC address. The MAC Address is found on the label on the bottom of the chassis. Only the last six digits are needed (e.g. 80-05-E0). MAC Addresses with characters ranging from A to F should be entered as: A - *1, B - *2, C - *3, D - *4, E - *5, F - *6)

	Pick up the phone and dial	Description
1.	##0000	To enter the configuring Mode
2.	26 8005 *50 886282263368#	To enter the MAC Address and phone number: MAC: 80-05-E0 Phone number: 886-2-82263368

Use the phone set to delete the permissions

The following example shows how to remove ARTDIO IPH’s MAC entry from the permissions table. You only have to specify ARTDIO IPH’s MAC Address that you want to delete from the permissions table. The MAC Address with characters ranging from A to F should be entered as: A - *1, B - *2, C - *3, D - *4, E - *5, F - *6)

	Pickup the phone and dial	Description
1.	##0000	To enter the configuring mode
2.	27 8005 * 50#	To delete MAC Address MAC: 80-05-E0

The transit function is only for local calls only. You can not transit long distance and/or international calls.

6.2.4. Inbound Transit Calls

Application: While out, you can place phone calls from traditional phones to local ARTDIO IPH at home. ARTDIO IPH at home will answer the call (requires that auto-answer be enabled) with a greeting. You then dial “# + Inbound Transit password + # + called ARTDIO IPH number + #”. If the password you entered is correct, your call will be connected through the IP network.

Configuration :

- (1) IP Searching must be previously completed between both ARTDIO IPHs.
- (2) You must configure your password

Follow this procedure to use your phone to configure your unit’s Inbound Transit password

Pick up the handset listen for the dialing tone

- 1. Dial ##0000
- 2. Dial “23 + inbound transit password + #” (the password limited to 8 digits)

This example demonstrates configuring “123” as the inbound transit password.

Pickup the handset and dials as follows:

- 1. ##0000 ; to start the configuring mode
- 2. 23123# ; enter “123” as the inbound transit password
- 3. Hang up the phone

- (3) The auto-answer feature of ARTDIO IPH at home must be enabled
(The default value is “Disabled”)

Procedure for using the phone to enable the auto-answer function :

Pick up the handset and listen for the dialing tone.

- 1. ##0000 ; to start the configuring mode
- 2. 131# ; to enable auto-answer function
- 3. Hang up the handset.

(4) Be sure that the “Transit Call” function of ARTDIO IPH at home is enabled.

(The default value is “Enable”)

Procedure for enabling Transit Calls:

Pick up the handset and listen for the dialing tone.

1. ##0000 ; to start the configuring mode
2. 221# ; to enable Transit Call function
3. Hang up the handset.

6.3. Sending Faxes over an IP network

You can send faxes through ARTDIO IPH to save the phone bills, the follows are the methods you can send faxes.

6.3.1. Sending Faxes between ARTDIO IPHs over an IP network

Application: Sending free faxes over an IP network between ARTDIO IPHs.

Dial method:” # + the fax number + *”

Examples : #4458275 *, # 3579999 *, #011886282263368 *.

6.3.2. Use Outbound Transit to Send Faxes

Application: Dialing: “# + the fax number + “*”

Dialing method: “# + the fax number + *”

Examples : #4458275 *, # 3579999 *, #011886282263368 *.

6.3.3. Use Inbound Transit to Send Faxes

Application: While out, you can still send a fax over an IP network using ARTDIO IPH that is located at your home.

Simply have your fax machine dial manually to ARTDIO IPH located at your home. Your ARTDIO IPH will then answers and play a greeting message. You can then dial ‘#’ + the Inbound Transit password + ‘#’ + the recipient fax machine’s number + ‘*’. If the password is correct, the call will be connected (through the IP network) to the remote Fax machine. When the remote fax machine responds, press the “START” key on the fax machine to send your FAX.

Dial method: ‘#’ + ‘the Inbound Transit password’ + ‘#’ + ‘fax number’ + ‘*’

The following example assumes the password is “123”

Examples: #123#4458275 * ;#123#3579999 * ;#123#011886282263368 *

7. Special Conditions

7.1. Use a Private IP Address in a NAT Environment

ARTDIO IPH is able to communicate with other ARTDIO IPHs under a NAT environment using Private IP Addresses on the LAN side of your IP Sharing device. However you must configure the IP Sharing device to treat ARTDIO IPH as a Virtual Server using UDP port 2000. All incoming packets transmitted to UDP port 2000 will be forwarded to ARTDIO IPH's private IP.

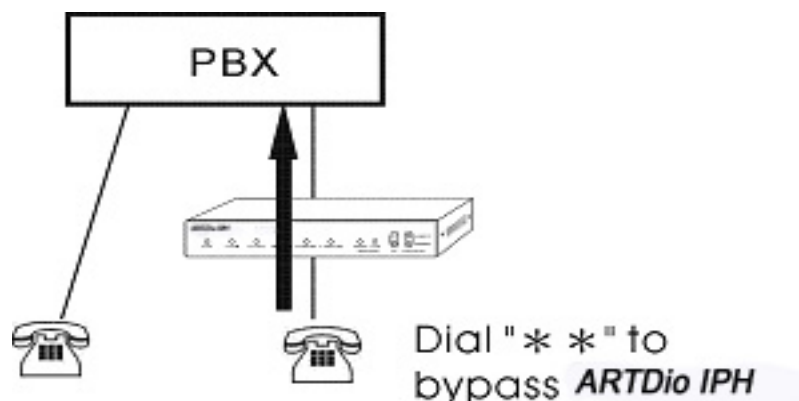
7.2. Firewall

If your network environment like most enterprises uses a Firewall, you will have to ask MIS personnel to enable the ports listed in the following table.

Packet Modes	Using Ports
Call Control Packets	UDP 2000
Voice Packets (RTP)	UDP 4000 – 4007
Fax Packets	UDP 4008 – 4011
FTP software upgrade	TCP 21
Web management	TCP 80

7.3. Bypassing the ARTDIO IPH

When ARTDIO IPH is connected to a PBX extension line, some PBX features such as Call Forwarding or other functions that start with “*” or “#” will not be available, this is because they are now being used by ARTDIO IPH unit. You can however dial “**” to bypass ARTDIO IPH and access the line directly. ARTDIO IPH will send the total amount of digits you dialed to the Line port. For example, if the access code to disable Call Forwarding on the PBX is *81, you can dial “**” first then dial *81.



8. Web Based Management

8.1. Acquiring the ARTDIO IPH's IP Address

If you do not know the current IP address of your ARTDIO IPH, you can hear the IP Address directly from the phone connected to ARTDIO IPH.

Follow the steps below:

Pickup the phone and dial as follows:

1. ##0000 ; to start the configuring mode
2. 40 ;to hear the IP Address(no “#” for ending)
3. Hang up the handset.

8.2. Accessing the Web Based Management Interface

When ARTDIO IPH has been installed successfully, you can use any PC that is connected to the same network to access ARTDIO IPH's Web Management Interface by opening your browser and entering ARTDIO IPH's IP address. If you don't know ARTDIO IPH's IP address you will not be able to access the Web Management Interface. If ARTDIO IPH is using a static IP address, simply enter the IP address into the Web Browser to access the Web Based Management Interface. If the IP address is acquired via PPPoE or DHCP, the IP address will be changed most of the time.

The following procedures demonstrate how to access ARTDIO IPH's Web Based Administration.

1. Open a Web browser window
2. Enter ARTDIO IPH's IP address located on the LAN.
3. Press the "Enter" key, the screen will show a sub-menu for entering your username and password.
4. Enter a valid username and password you entered previously.
5. Click the "OK" button, then you will be in the Web Management Interface start page.

9. Appendix

9.1. Appendix A: Manual IP Searching Procedure

Perform the following steps to do the IP Searching:

1. Use the phone connected to ARTDIO IPH to dial to ARTDIO IPH's number that you attempt to search (without the “#” key).
For example: 00216264451245
2. When the recipient answers the phone, ask him/her to press the “#” key twice. The searching process will then begin and both sides should hear the searching tone (a short beep every two seconds).
3. About 15 seconds later, you should hear three consecutive beeps indicating a successful searching. Otherwise you will hear one long beep indicating that searching has failed.
4. Hang up the handset.

The manual IP Searching function can be used when ARTDIO IPH is connected to a PBX extension line. You must dial the PBX first then transfer to the extension number that ARTDIO IPH is connected to. Assuming you are dialing from Taipei to U.S.A. and the number you are dialing is 1-626-3532158 with extension 540, follow the steps below:

1. Dial “00216263532158” which connects to the recipient's PBX.
2. Dial the extension number “540” after the greeting.
3. When the recipient at extension number “540” answers the call, ask him/her to press the “#” key twice.

4. The IP Searching function will then begin and the called party will hear the searching tone (a short beep every two seconds).
5. It takes around 15 seconds to complete the IP Searching process.
A successful IP searching will be confirmed with three consecutive tones on the caller's side. (One long tone indicates the process has been failed)
6. The recipient can now hang up the phone.

When the above is complete, you should then be able to make an IP call through ARTDIO IPH by dialing "#00216263532158540#".

9.2. Appendix B: Automatic IP Searching Procedure

Between two ARTDIO IPHs, you can also dial "* + the phone number + #". However, the Automatic IP Searching process will start every time the phone number's IP information can't be found in the (built in) dynamic phone book. The acquired result after a successful searching process will be stored in the dynamic phone book and saved to the flash memory which will be updated every hour. This will ensure that data won't be lost even when ARTDIO IPH's power is turned off. However the information is updated on an hourly basis, some information may be lost if ARTDIO IPH is turned off between updated period. The Automatic IP Searching procedure is slightly different depending on whether the Automatic Answering function on the remote ARTDIO IPH is enabled or not. Two examples with detailed procedures are described below:

Example 1: The Automatic Answering function on the remote ARTDIO IPH is disabled (default value) :

The following example assumes you are dialing from U.S.A. to Taiwan and the number you are dialing is: 011-886-2-63532158.

Pick up the handset and dial “*011886263532158#”

If the number you are dialing can not be found in the dynamic phone book, ARTDIO IPH will then use the phone line to reach the remote ARTDIO IPH and attempt to get the IP information back. Since the automatic answering function is disabled, the searching process will start until the called party answers the phone. The remote phone set connected to the remote ARTDIO IPH will ring until somebody picks up the phone. When the called party answers the phone, he/she will hear a busy tone and hang up the phone. At that point the IP Searching process begins. The calling side will hear the searching tone (a short beep every two seconds, an unsuccessful searching process will respond with busy tone). If the searching process is successful, ARTDIO IPH will switch the regular phone call to IP call automatically. The called ARTDIO IPH's phone will ring again, after the called party picks up the phone, then you can begin voice communication over IP.

Example 2: The Automatic Answering function on the remote ARTDIO IPH is enabled.

Assume you are dialing from U.S.A. to Taiwan and the number you are dialing is: 011-886-2-63532158, the IP searching steps are:

Pick up the handset and dial “*011886263532158#”

If the number you are dialing can not be found in the phone book, ARTDIO IPH will use the phone line to reach the remote ARTDIO IPH and acquire the IP information. Since the automatic answering function is enabled, so the remote ARTDIO IPH will come out the greetings, the searching process will start as the remote ARTDIO IPH answers with the greetings. The calling side will hear the searching tone (a short beep every two seconds, an unsuccessful learning process will respond with busy tone). If the searching process is successful, the calling side will hear three consecutive tones, hang up and dial “# + phone number + #” again, you can begin voice communication over IP.

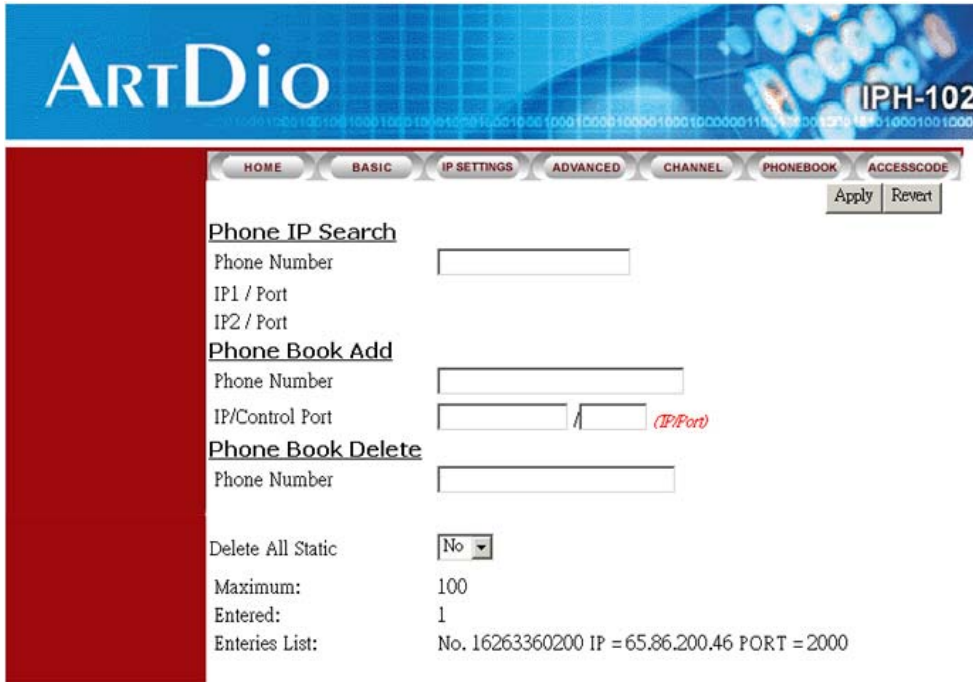
9.3. Appendix C: Edit the phone book

9.3.1. Use the Web Based Management interface to edit the static phone book

If you already know the static IP Address and Signaling UDP Port of a particular remote ARTDIO IPH, you can use the Web Based Management to add the Static Phone Book so that you can make IP phone calls without having to go through the IP Searching process. The Static Phone Book keeps all phone numbers and IP addresses. In the “Phone Number” field, you should enter a complete phone number including the country and area code. For example, if the number you are adding is 626-2263368, you must enter 16262263368. If the number is under a PBX, you must enter 16262263368314. The number 2263368

represents the company phone number and 314 is the extension number.

In the “IP/Control Port” field, you should enter the static IP address and the Signaling UDP port used of the remote ARTDIO IPH. The factory default is 2000.



9.3.2. Move a dynamic phone book entry to the static phone book

If the called ARTDIO IPH is using a static IP address, you can also use the manual or automatic IP searching process to acquire the IP address first, and then you can move it into the static phone book. After the IP has been searched, follow the steps below to move it into the static phone book.

Pick up the handset connected to ARTDIO IPH

1. ##0000 ;to enter the configuring mode
2. 32 + phone number ;to move the phone number’s IP to the static phone book
3. 981 ; restarts to update information
4. Hang up the phone

9.4. Appendix D: Enabling/disabling the automatic answer mode

Enable the automatic answer mode using a telephone set:

Pick up the handset and listen for the dialing tone

1. ##0000 ; to enter the configuring mode
2. 131# ; to enable Auto-answer mode

3. Hang up the phone

Disable the automatic answer mode using a telephone set:

Pick up the hand set and listen for the dialing tone

1. ##0000 ; to enter the configuring mode
2. 130# ; to disable Auto-answer mode
3. Hang up the phone

9.5. Appendix E: Phone Set Command Codes and Parameters.

Pick up the handset and listen for the dialing tone. Dial “##0000” and listen for three consecutive tones before setting the following parameters. The details please refer to

5.2.2. Step 2: IP Setting

Command	Description	Parameters
01	Area Code	1 ~ 3 digits
02	Phone Number	1 ~ 19 digits
03	IP State	0 : static; 1: DHCP; 2: PPPoE
04	IP Address	xxx*xxx*xxx*xxx
05	Subnet Mask	xxx*xxx*xxx*xxx
06	Default Gateway	xxx*xxx*xxx*xxx
07	Primary DNS Server IP	xxx*xxx*xxx*xxx
08	Secondary DNS Server IP	xxx*xxx*xxx*xxx
09	Channel T.38 (FAX) Control	xxc where, xx: channel, c: 0 disable, 1 enable
10	Channel Port State Control	xxc where, xx: channel, c: 0 disable, 1 enable
11	Select Control Port	0~65535
12	Select VoIP Base Port	0~65534 (limit to even port number only)
13	Auto-Answer Control	0 : disable ; 1: enable
14	Call Forward Control	0 : disable ; 1: enable
15	Set Call Forward Phone Number	1 ~ 19 digits
16	Set Fax Call	0 : no forward ; 1: forward

Command	Description	Parameters
	Control	
17	Select Line Call Type (ARTDIO IPH only)	0 : voice call; 1: fax call
19	Set PBX CO Line Access Code	6 digits (0~9 or * where, * means pause)
20	Manual IP Learning Control	0 : disable ; 1: enable
21	Select Greeting Mode	0 : off ; 1: on
22	Inbound/Outbound Transit Call Control	0 : disable ; 1: enable
23	Add an Inbound Transit Call Password	1 ~ 8 digits
24	Delete an Inbound Transit Call Password	1 ~ 8 digits
25	Delete All inbound transit call Passwords	1 : do it
26	Add a Member Entry of an Outbound Transit Call	MAC + Phone Number where, MAC : last 6 digits of the MAC Address; 0 ~ 9, A (*1), B (*2), C (*3), D (*4), E (*5), F (*6). Phone Number: 1 ~ 19 digits
27	Delete a Member Entry of an Outbound Transit Call	MAC where, MAC : last 6 digits of the MAC Address; 0 ~ 9, A (*1), B (*2), C (*3), D (*4), E (*5), F (*6)

28	Delete all Outbound Transit	1: do it
----	-----------------------------	----------

Command	Description	Parameters
	Call members	
29	Add off-net number	Phone Number (1 ~ 19 digits) (ARTDIO IPH only)
30	Delete off-net number	Phone Number (1 ~ 19 digits) (ARTDIO IPH only)
31	Delete all off-net numbers	1: do it (ARTDIO IPH only)
40	Listen for the IP Address	(ending "#" is not required) (ARTDIO IPH -102) only)
41	Listen for the Subnet Mask	(ending "#" is not required) (ARTDIO IPH only)
42	Listen for the Default Gateway	(ending "#" is not required) (ARTDIO IPH only)
88	Change the Web Based Management Interface Password	1 ~ 6 digits
89	Export the ARTDIO IPH's IP Information to a PC	xxx*xxx*xxx*xxx (the IP Address of the destination PC)
90	Add an FTP Server Password	(null) : clear password 1 ~ 6 digits : password
91	Line Port Transmission/Receiving Volume Adjustment	0: normal volume 1: Receiving +2 dB 11: Receiving +3 dB 111: Receiving +4 dB 2: Transmission -2 dB 22: Transmission -3 dB 222: Transmission -4 dB
92	Phone Port Transmission/Receiving Volume Adjustment	0: normal volume 1 or 11 or 111: +2 dB 2: -2 dB 22: -4 dB

Command	Description	Parameters
		222: -6 dB
94	Set the Alarm Clock Time	0 : disable or, hh*mm*c where, hh*mm: hour*minute c: 1: alarm one time; 2: alarm every day
95	Regional ID	2 digits
96	Play audio Greeting	(# stop play)
97	Reset unit to Factory Default values	1: reset all; 2: preserve IP
98	System Restart	1: do it
99	Record audio Greeting	*: start record (#: stop record) 0: start play (#: stop play) 9#: save #: exit record mode

9.6. Specifications

ARTDIO IPH-102	
Specification	
Voice Port	1FXS + 1 FXO
Fax Transit	T.30/T.38
Foreign Exchange Station (FXS) Interface	Circuit to connect a standard phone or fax machine.
Foreign Exchange Office (FXO) Interface	Circuit to connect to a PSTN central office or PBX extension line.
Connector Type	RJ11
Voice Compression	G.711 G.729AB
Voice Activity Detection (VAD)	G.729A B
Echo Cancellation	G.165/G.168 16ms echo tail
Jitter Buffer	Adaptive jitter buffer adjustment
Input/Output Gain	In/Out + / -6 db (adjustable)
Packet Time	40ms
Transmission Protocol	RTP
Call Control Protocol	Proprietary Call Control Protocol
Phone Book	Auto learning and manual setting

Management Function	
Management Tools	Web browser and traditional phone
IP Address	Fixed IP Address Dynamic Address (DHCP), PPPoE
Firmware Upgrade	FTP
Other Specification	
Power Supply	Power Adaptor OUTPUT: 9VDC 600mA
Dimension	190mm x 25mm x 110mm (IPH -102) 7.5"x .98" x 4.3"
Working Environment	Operation temperature : 0°C to 50°C Storage temperature: -10°C to70°C
Electromagnetic radiation Standard	FCC part 15 Class B CE Mark, UCCI
LAN Interface	
Number of Ports	2 ports
Interface Standard	10 / 100 Ethernet, Auto Negotiation (10/100 Mbps Auto Negotiation)
Connectors type	RJ-45

9.7. Unit Mounting Dimension

