

Intelligent Digital Surveillance System



User's Guide

16 Video channel surveillance and recording

eSoft

Table of contents

1. PREFACE	3
2. ARCHITECTURE	3
3. OPERATION	3
3.1. SECURITY CONTROL PROGRAM (CONTROL)	3
3.2. ADMINISTRATION PROGRAM (ADMINISTRATOR)	3
3.2.1. SYSTEM LOGON	4
3.2.2. MAIN SCREEN OF ADMINISTRATION PROGRAM	4
3.2.2.1. SYSTEM ADMINISTRATION	5
3.2.2.1.1. E-MAIL	5
3.2.2.1.2. MESSAGE SERVICE	5
3.2.2.1.3. HOLIDAY SETUP	6
3.2.2.1.4. VIDEO RECORDING CAPACITY SETUP	6
3.2.2.1.5. SYSTEM ALARM SETUP	7
3.2.2.1.6. JUMPING SCREENS SETUP	9
3.2.2.1.7. SOFTWARE REGISTRATION	9
3.2.2.2. USER AND GROUP	10
3.2.2.2.1. USER	10
3.2.2.2.2. GROUP	11
3.2.2.3. E-MAP	12
3.2.2.3.1. ADD AREA	12
3.2.2.3.2. ADD EQUIPMENT	13
3.3. MONITORING PROGRAM (MONITOR).....	16
3.3.1. SYSTEM LOGON	16
3.3.2. VIDEO SCREEN DISPLAY AREA	17
3.3.3. SPLIT SCREENS FUNCTION OPTION AREA	17
3.3.4. VIDEO CONTROL OPERATION AREA.....	18
3.3.5. SYSTEM FUNCTION OPTION AREA.....	19
3.3.6. ALARM REPORT	19
3.3.7. ALARM E-MAP	19

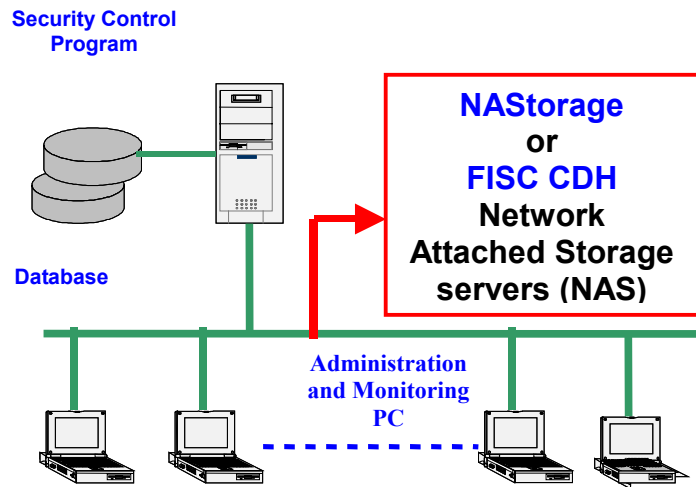
1. Preface

Thank you for purchasing the “Intelligent Full-Function Digital Surveillance System”.

The software supports Windows 2000/XP operating systems. Please read the user’s guide carefully to assure the normal operation of the system.

2. Architecture

This software is developed under the Intranet and Internet environments and is divided into three programs: **administration, security control and monitoring.**



-The administration program is responsible for setting the system, equipment and the alarm parameters as well as the user priority.

The administration program of the same licensed system can be installed on multiple computers as required.

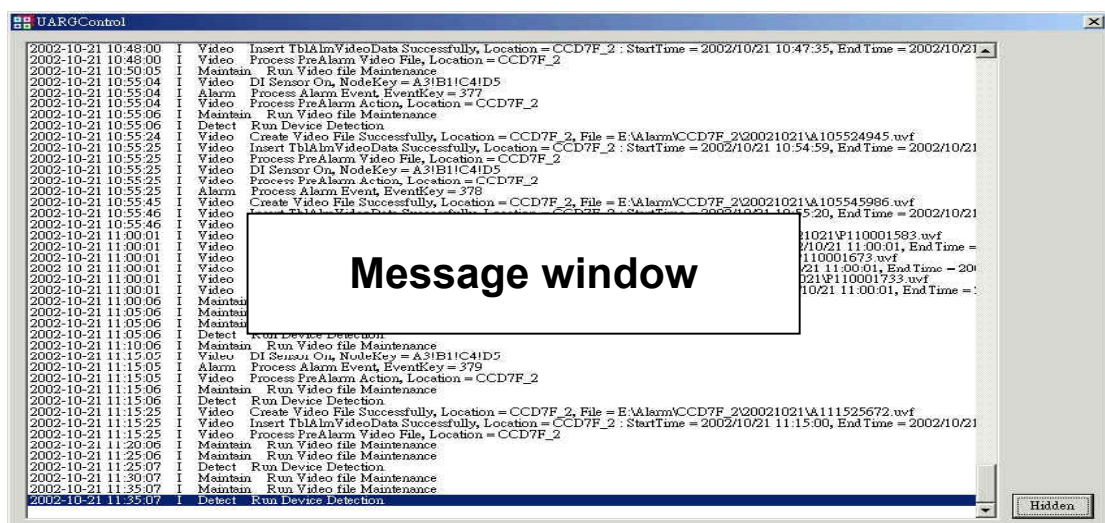
-The security control program is responsible for setting video recording, I/O and the alarm link. The security control program of the same licensed system can only be installed on one of the computers.

-The monitoring program is used to monitor the instant image and enquire alarm events. The monitoring program of the same licensed system can be installed on multiple computers as required.

3. Operation

2.1. Security Control Program (control)

The security control program can be executed on only one specific computer. The system will add the “Enable” group into the “Start” and “Program” after the system is installed. The window will zoom in after enabling the program and will show the instructions.



3.2 Administration Program (Administrator)

The administration program can be executed simultaneously on several computers. Please refer to the System Installation Guide for the standard installation procedure.

The detailed operation is described below:

3.2.1. System Logon

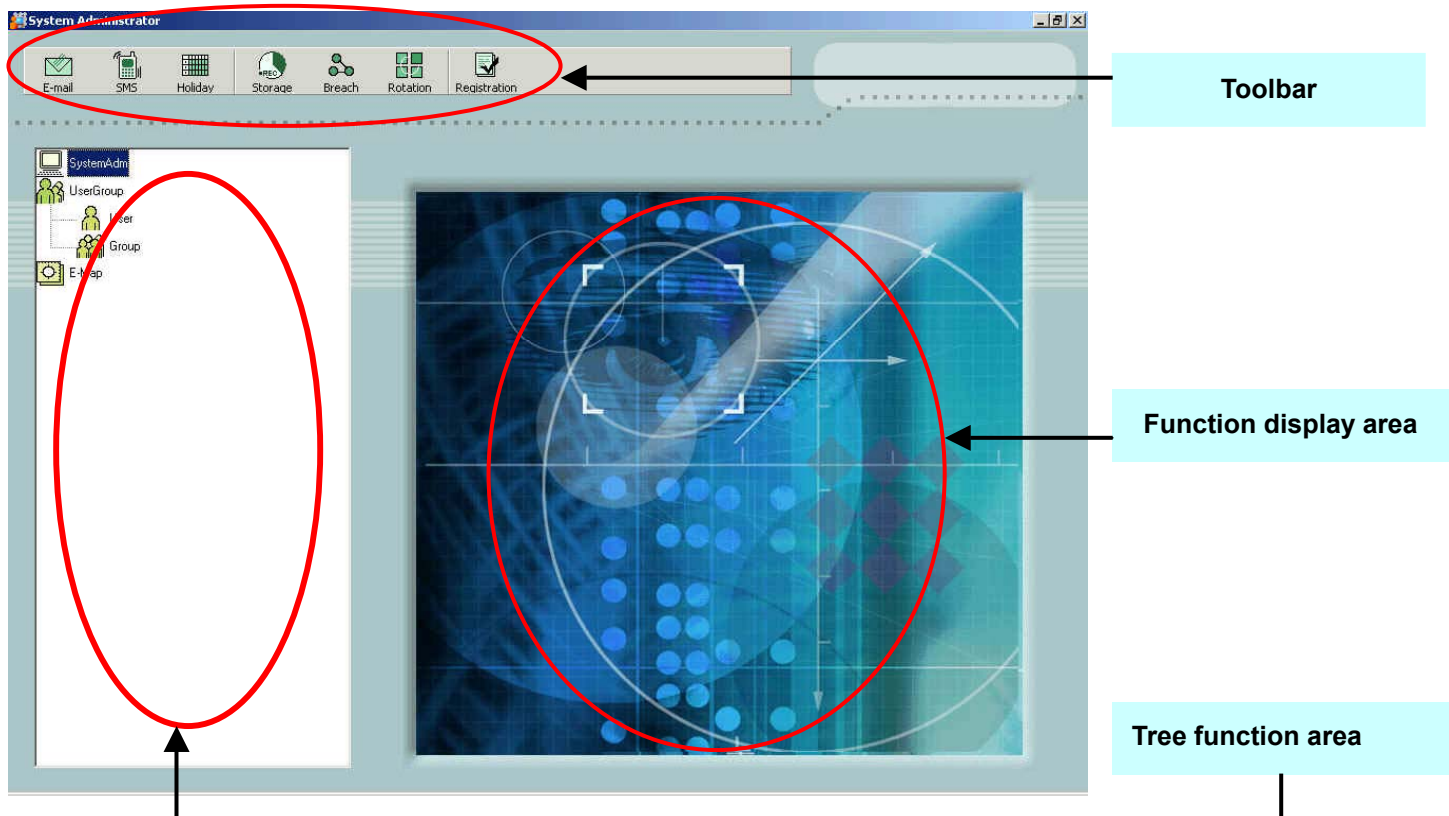


Before executing the software, the user must key in a user name and a password to confirm his identity and assure the security use and administration requirements of the system.

Please refer to the following for adding a new user name and password:

- If you log on onto the system through Internet, please click the "Logon from Internet" option.
- If you use three times an incorrect user name or password, the system will automatically stop logging on.

3.2.2. Main screen of the administration program



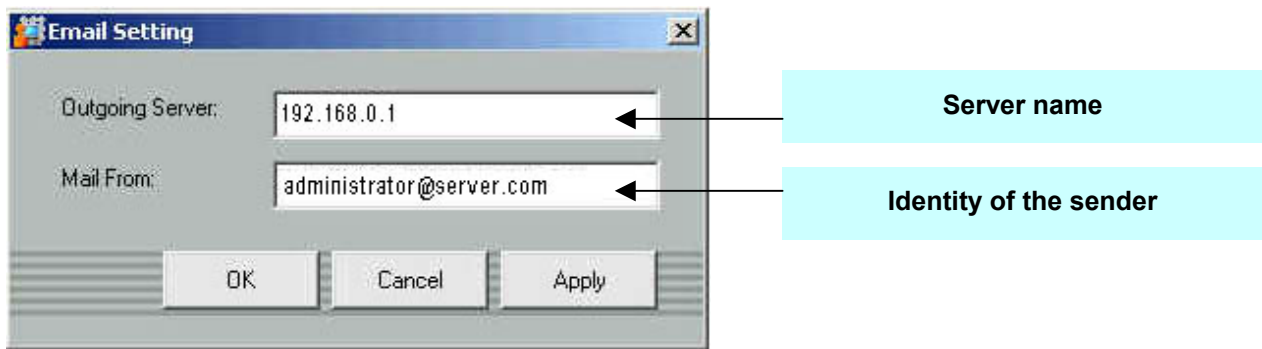
The main screen of the administration program is divided into three (3) main areas:

1. **Toolbar**: It is the main functional option for the display area. The contents of this toolbar option will vary according to the option that you select from the tree function area.
2. **Tree function area**: It mainly includes three major sections:
 - 2.1 System Administration
 - 2.2 User and Group
 - 2.3 e-Map
3. **Function display area**: It mainly displays the data in the display area while executing the function of the tree function area. It also includes the e-Map display area.

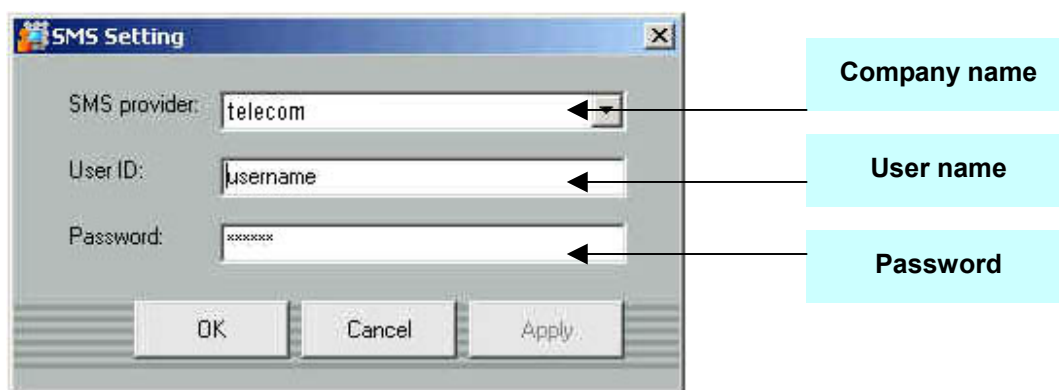
System administration functions

The main system administration functions of the software include:

3.2.2.1.1. E-mail



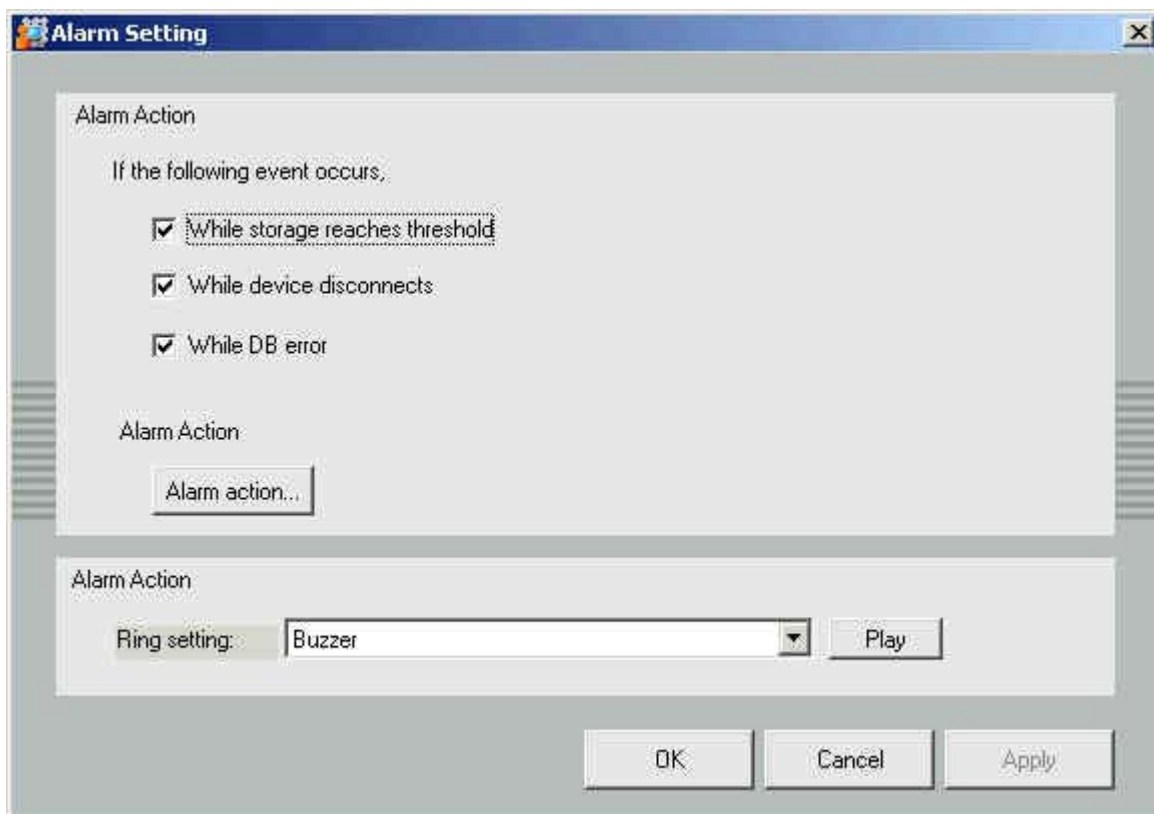
3.2.2.1.2. Message service



- *Capacity Allocation* : It represents the maximum capacity of the data storage.
- *Capacity Alert Point* : It represents the data storage capacity and alarms if the stored data exceeds this alert point.
- *Reserved Capacity* : It represents the minimum capacity of the old stored data when repeatedly using the storage space.

Note: If the data flow exceeds the “*Capacity Alert Point*”, the system will inform the related staff with a specific alarm according to the setup described in “Section 3.2.2.1.5 System Alarm Setup”. If the data flow reaches the “*Capacity Allocation*” point, the system will automatically delete some of the old data until the data capacity reaches again the “*Reserved Capacity*” point.

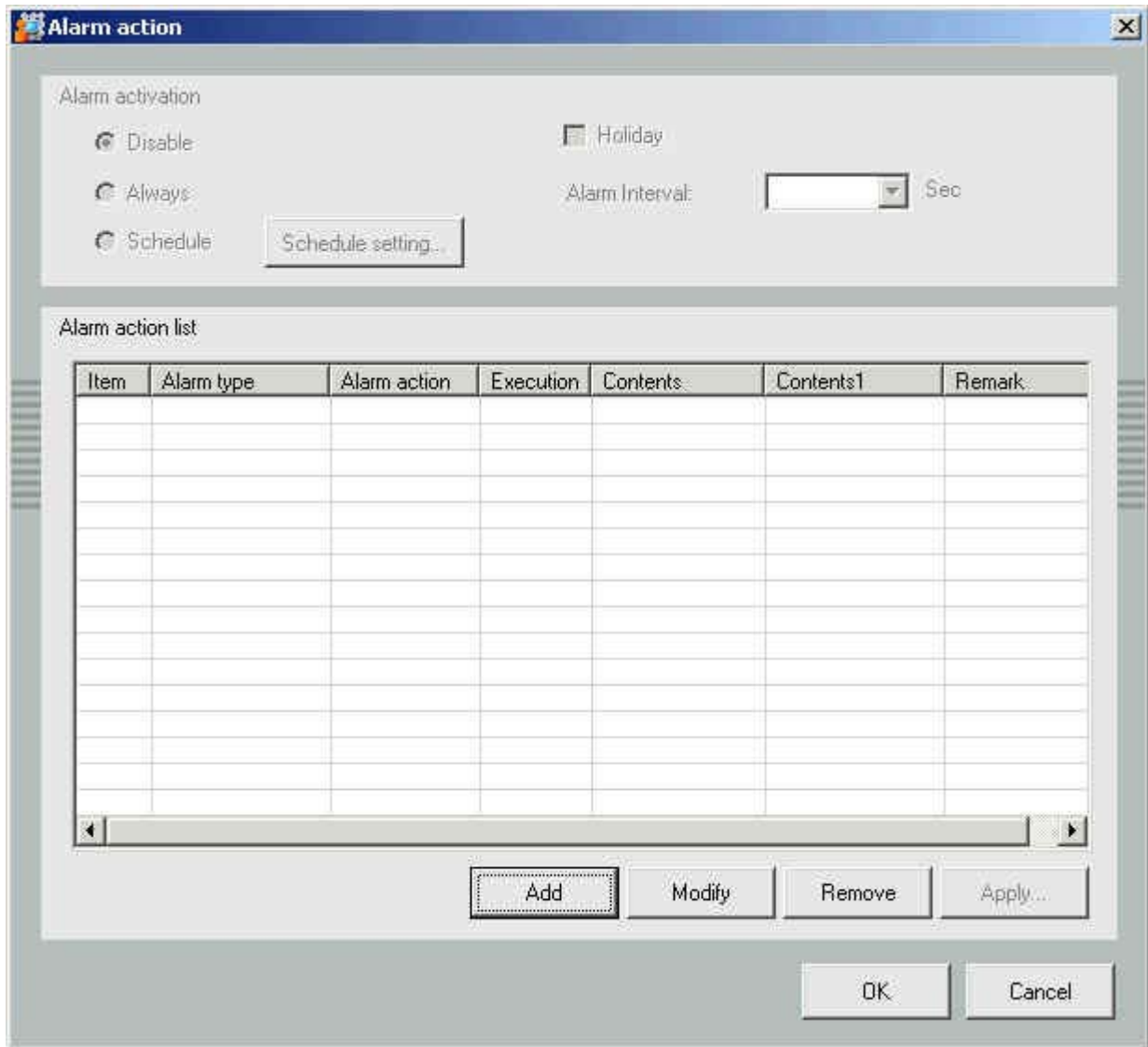
3.2.2.1.5. System alarm setup



It lets the administrator notice any related staff for repair and maintenance work when errors occur in the system.

The software provides three main system warning sources :

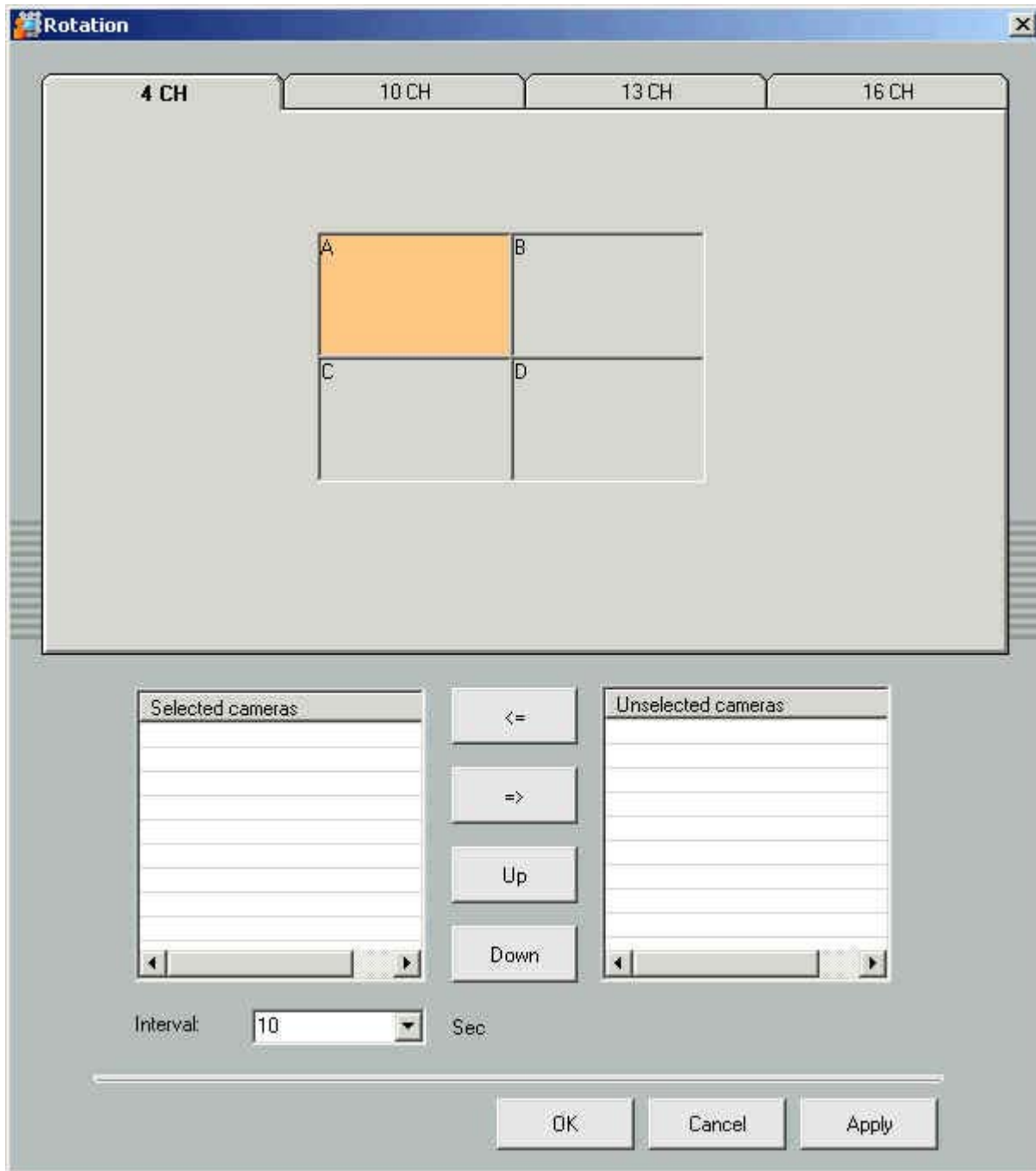
1. If the hard disk capacity exceeds the alert point (*please refer to the “Section 3.2.2.1.4 Video Recording Capacity Setup”*).
2. If the network is disconnected.
3. If the database is abnormal and its access remains abnormal when it runs again. The system will alarm such event as the only source for the abnormality.



For a related warning setup, you can press the “Alarm Action ...” button for the setup in the alarm link window.

As for the system alarm section, there are two options: “*All-time Enable*” and “*Disable*”. The current link provides two ways of noticing the related staff : by e-mail & message. Press the “*Add*” button to add the link or use any other ready set settings.

3.2.2.1.6. Jumping screens setup



It allows the administrator to select the cameras to display the desired 4/10/13 or 16 split screens provided by the software. For each display window, the system will perform the jumping screens according to the specified intervals if more than one camera is selected.

You can click the display window and make your selection in the following windows.

3.2.2.1.7. Software registration

Refer to the System Installation Guide for the description of the registration.

3.2.2.2. User and Group

3.2.2.2.1. User

The screenshot shows the 'User setting' dialog box with the 'General' tab selected. The 'User belongs to' sub-tab is also visible. The form includes the following fields and options:

- User name: [Text Input]
- Full name: [Text Input]
- Remark: [Text Input]
- Email: [Text Input]
- Phone no: [Text Input]
- Password: [Text Input]
- Confirm password: [Text Input]
- User must change password at next logon
- User cannot change password
- Account is disabled
- Validation: Start Date: 9/12/2002, End Date: 9/12/2002

The administrator can add a user name and a password with this function.

Press the “Add User” button in the toolbar to display the “User Setup” dialog window wherein the “User Name”, “Password” and “Confirm Password” fields must be filled in.

The software lets the user select the compulsory option to change the password, permanently stop the use of this account or just open this account for a specified time period after the first log in.

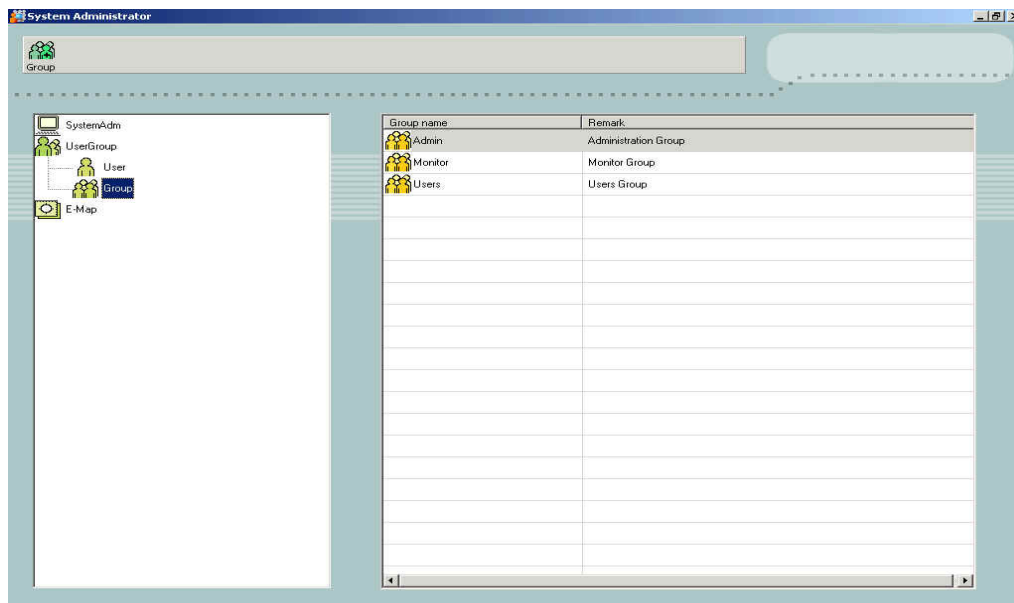
The screenshot shows the 'User setting' dialog box with the 'User belongs to' sub-tab selected. It displays two tables for group selection:

Selected group:	
Group name	Remark
Users	Users Group

Unselected group:	
Group name	Remark
Admin	Administratio...
Monitor	Monitor Group

In addition, you can add a system default or a user-defined group to this account and share the functions of the group. If you add many different groups with different priorities at the same time, the system will operate the priority as inscribed.

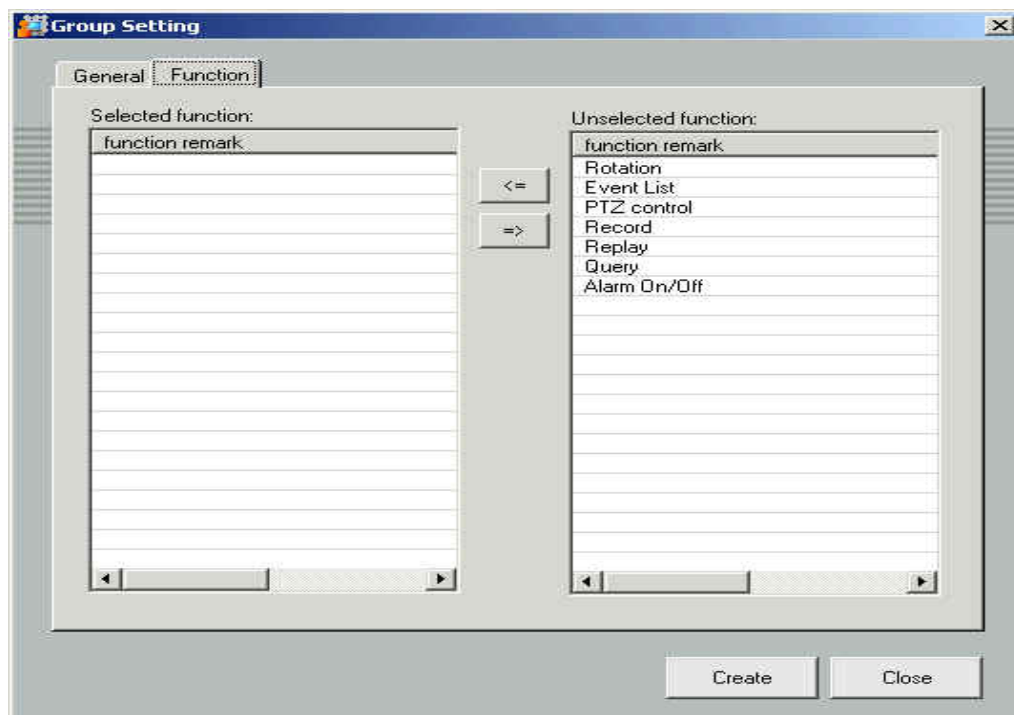
3.2.2.2. Group



There are two default groups:

1. *Administrator* : This user has the highest priority to any operation including the functions of adding and deleting equipment and accounts for the control.
2. *Monitor* : This user has the priority to the operations of viewing images, accessing history data and controlling cameras and does not has the aforementioned administrator priorities .

Note that these two basic groups **cannot** be deleted.



The administrator can also define the function group according to the requirements of its administration and give the priority of the executable function to such group through the “*Function Attributes*”.

3.2.2.3. e-Map

It lets the administrator manage the equipment and know the exact location of the event when the alarm is triggered.

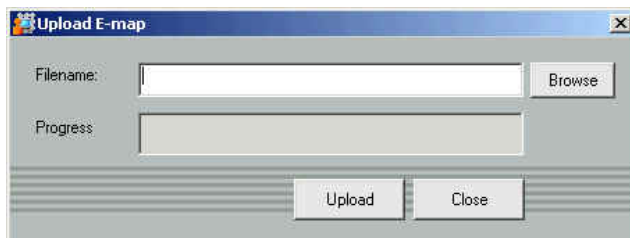
Details are as follows:

3.2.2.3.1. Add area

Use the “Add Area” button of the toolbar to establish the area node according to the requirements of the administration and click it. The following options will appear in the toolbar:



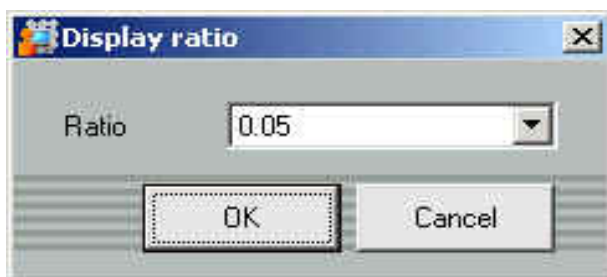
1. *Add Area* : Add another area node under this node.
2. *Edit Area* : Change the area name of this node.
3. *Delete Area* : Delete this area node (*please note that the system will delete all sub-area nodes and equipments under the node*).



4. *Upload Background Figure* : Add an area figure onto this area node.

The software provides the following formats for the graphic file :

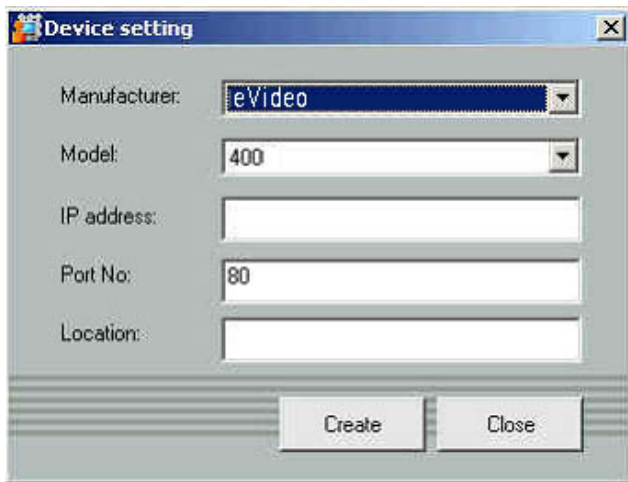
5. *Update Background Figure* : Since the software will save the related settings in the cache at the end of running the program and, for a better execution performance (*if an administrator updates the background figure at the remote end*), the administration program at such end will not automatically update the background figure. Therefore, we can use this function to update or logon onto the system immediately.



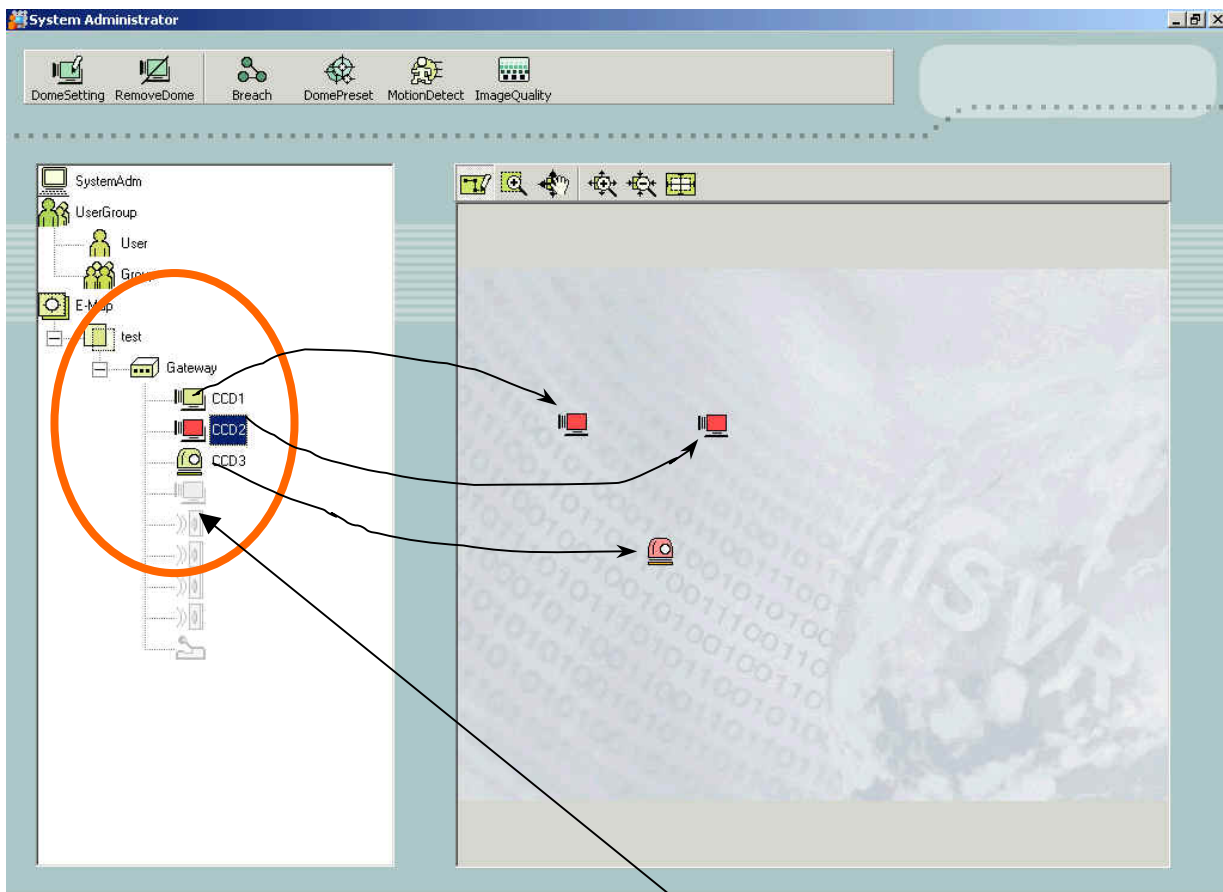
6. *Display Ratio* : It sets up the display ratio of the equipment figure and the background figure.
7. *Add Network Camera* : Please refer to the next section : “Add Equipment”.
8. *Add Video Gateway* : Please refer to the next section : “Add Equipment”.
9. *Add I/O Controller* : Please refer to the next section : “Add Equipment”.

3.2.2.3.2. Add equipment

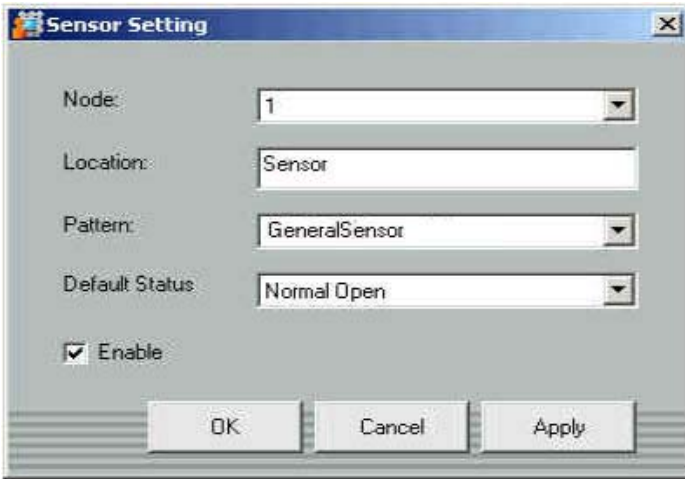
You can add equipment after completing the construction of area nodes. Since the operation for each equipment is very similar, we will take the “Add Video Gateway” as an example.



1. Press the “Add Video Gateway” button.
2. Set the related settings for the hardware and network, including the fields of - *IP address - communication port – brand/ model number - equipment location - the fields of IP address and equipment location cannot be repeated.* The system will proceed with the confirmation.



3. After setting up the hardware, the system will automatically add the related figures according to the number of video channels and GPIOs of the hardware. The equipment name remains blank before you add the camera and sensor. With the mouse you will be able to place the related cameras at the surveillance locations and give them a code (ex. Stock # 1, Storage # 5, Booth # 3, etc.)



8. After completing the setup for the video, click on the DI icon and the “*Edit Sensor*” to process the channel number, IO configuration and type, of which there is an enable button. If you want to enable this sensor, click such option.
9. Follow Step 7 of the “Video Alarm Link Setup” procedure for the setup. Set up the alarm link of the desired sensor.

The above description provides the related procedure for adding the “Video Gateway”.

The procedure to set up the *network camera* and the *I/O controller* is similar and will thus not be described here.

Please refer to the contents of the previous sections for other set ups.

3.3 Monitoring program (monitor)

The monitor (*monitoring program*) of the software can be executed simultaneously onto several computers. Please refer to the *System Installation Guide* for the standard installation procedure.

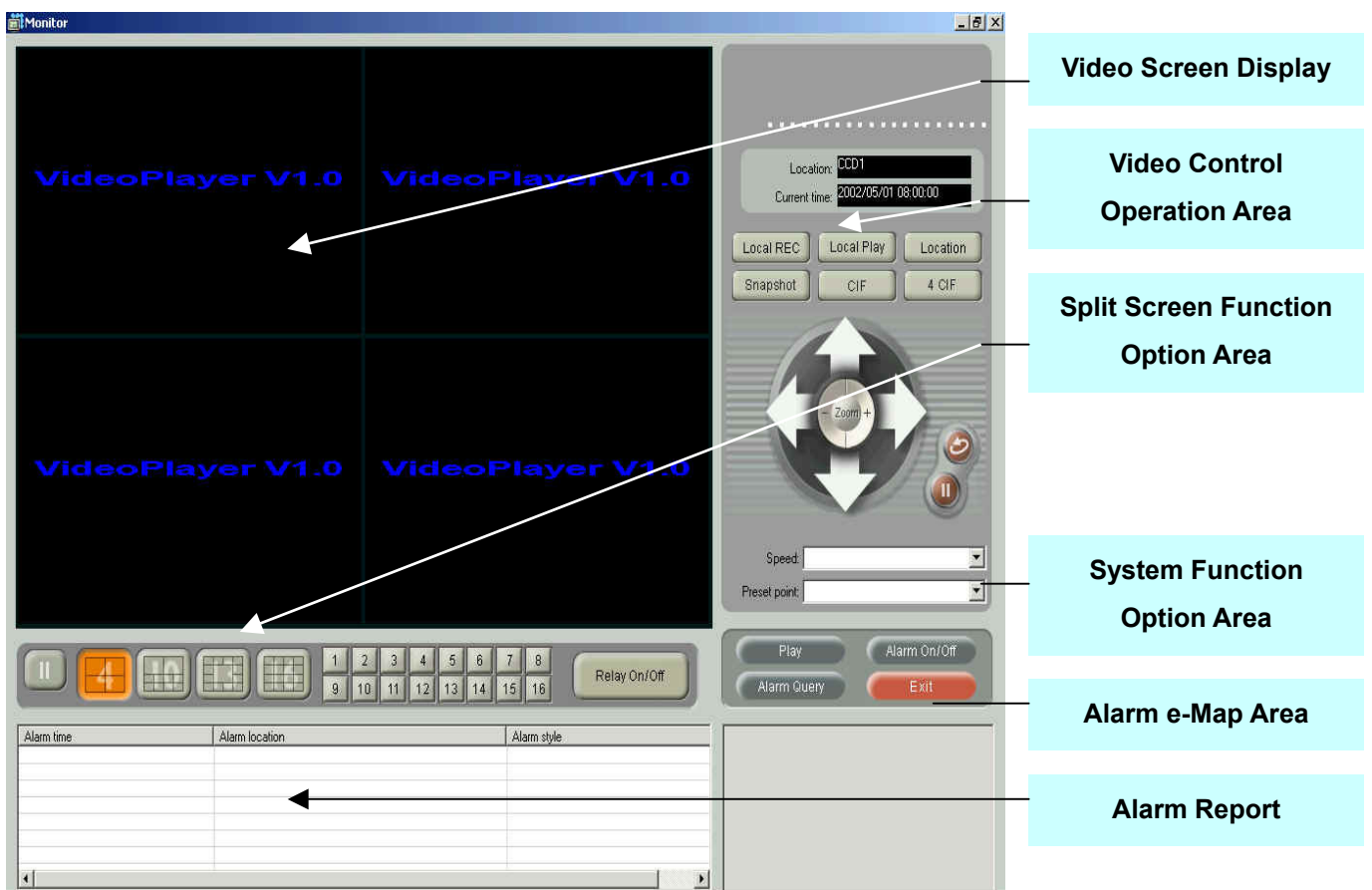
The following is the detailed description of the operation.

3.3.1. System log on

Before executing the software the user must key in the user name and password for authentication to assure the secure use of the system and the requirements of the administration. Please refer to the following procedure to add user name and password.

If you log onto the system via Internet, please click the “Logon from Internet” option (*remember - if you use three times an incorrect user name or password, the system will automatically stop logging on*).

The main screen of the system is shown below:



The main screen of the monitoring program is divided into 6 major areas:

1. Video Screen Display Area
2. Split Screen Function Option Area
3. Video Control Operation Area
4. System Function Option Area
5. Alarm Report
6. Alarm e-Map

3.3.2. Video screen display area

This function area displays the instant split jumping screens or single screen. If you want to control a certain screen of the split screens, click the split windows. The surrounding of such window will show a red frame, and the operation will focus on the split window in the video operation area.

3.3.3. Split screens function option area



: The video screen display area is shown in a 4-split window.



: The video screen display area is shown in a 10-split window.



: The video screen display area is shown in a 13-split window.



: The video screen display area is shown in a 16-split window.



: The video screen display area shows the channel video.



: Enables or disables a specified relay status.



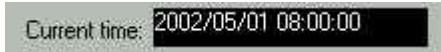
: Stops the instant video display and the jumping screen functions.

3.3.4. Video control operation area

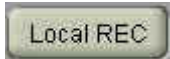
This area carries out the video recording of his machine by a specific selected camera and the PTZ control function for the user.



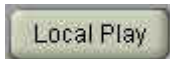
: Displays the location and name of the specific camera.



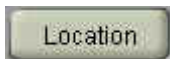
: Displays the date and time of that particular image.



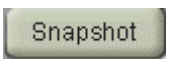
: Carries out the instant video recording for the user by his machine.



: Plays the recorded history video file on his machine.



: Selects the directory for saving the video play recorded by his machine.



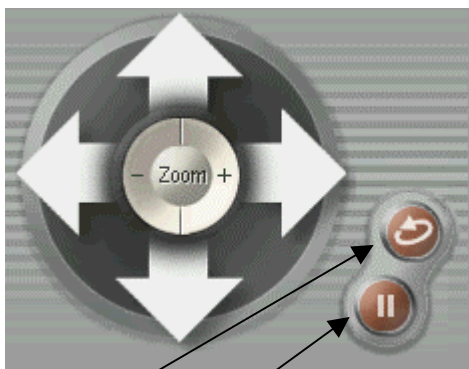
: Takes a snapshot for the currently displayed instant image, which can be saved as a video file in the JPEG or Bitmap format.



: Normal size of the displayed image



: Doubles the size of the displayed image



: PTZ Control Area



: Automatic navigation function.



: Stops the automatic navigation function.



: Adjusts the PTZ moving speed.



: Selects the set default location.

